

| | | |
|--|------------------------|---|
| WAAS CH 93718 W19A | APP CRS 187° | Rwy Idg 5002 TDZE 441 Apt Elev 441 |
|--|------------------------|---|

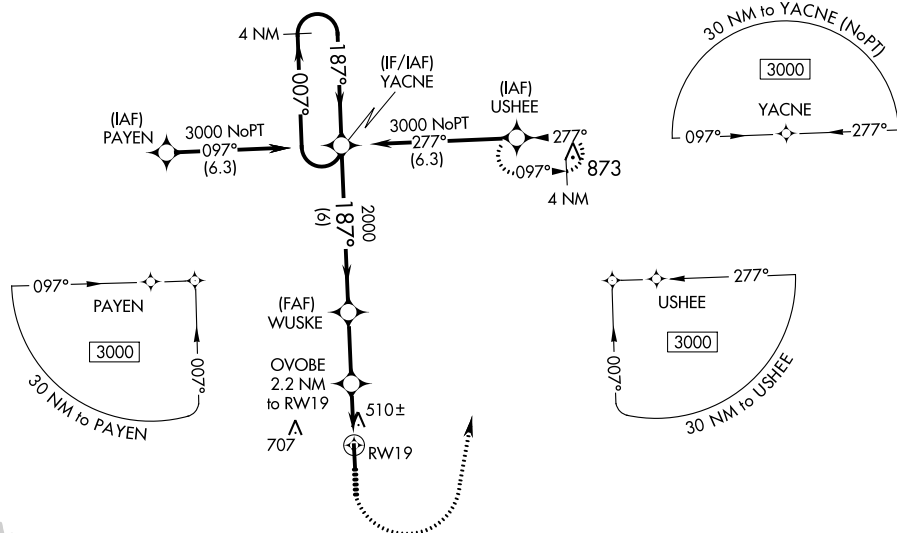
RNAV (GPS) RWY 19

MECKLENBURG-BRUNSWICK RGNL (AVC)

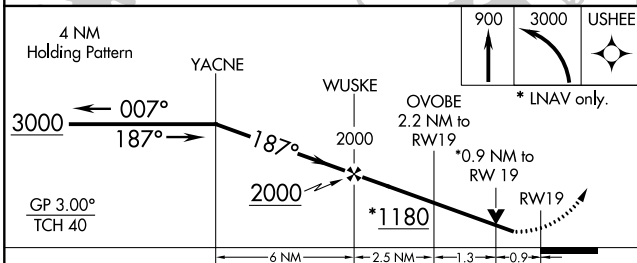
T For uncompensated Baro-VNAV systems, LNAV/VNAV NA below -15°C (5°F) or above 54°C (130°F). DME/DME RNP-0.3 NA. Rwy 19 helicopter visibility reduction below $\frac{3}{4}$ SM NA.


MISSED APPROACH: Climb to 900 then climbing left turn to 3000 direct USHEE and hold.

AWOS-3
127.525

WASHINGTON CENTER
118.75 377.1UNICOM
122.8 (CTAF) **L**

NE-3, 31 DEC 2020 to 28 JAN 2021



| CATEGORY | | A | B | C | D |
|--|-----|----------------------|----------------------|--|-----------------------|
| LPV | DA | | 691-1 | 250 (300-1) | |
| INAV/ VNAV | DA | | 710-1 | 269 (300-1) | |
| INAV | MDA | | 760-1 | 319 (400-1) | |
|  CIRCLING | | 860-1 419 (500-1) | 900-1 459 (500-1) | 1060-1 ^{3/4} 619 (700-1 ^{3/4}) | 1060-2 619 (700-2) |

