

WAAS CH 58318 W27A	APP CRS 272°	Rwy Idg TDZE 494 Apt Elev 494
--	------------------------	---

RNAV (GPS) RWY 27

LOUISA COUNTY/FREEMAN FIELD (LKU)

RNP APCH.

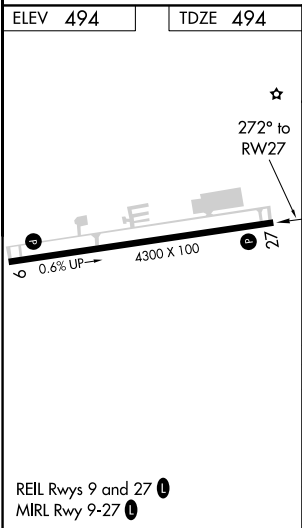
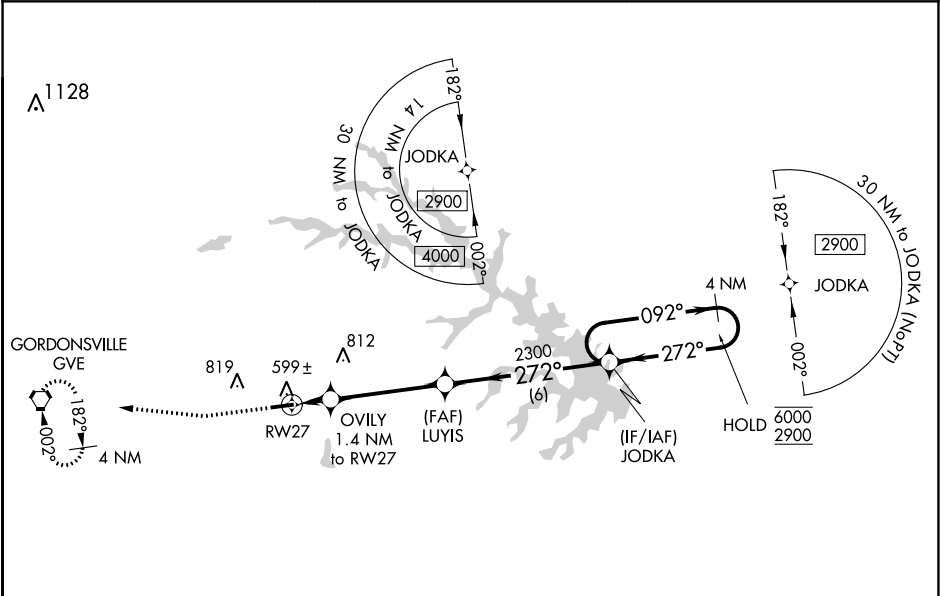
⚠

⚠

Circling NA north of Rwy 9-27. Baro-VNAV NA when using Orange altimeter setting. For uncompensated Baro-VNAV systems, LNAV/VNAV NA below -15°C or above 54°C. When local altimeter setting not received, use Orange altimeter setting and increase all DA to 780 feet and all MDA 40 feet and increase LPV and LNAV/VNAV visibility $\frac{1}{8}$ SM.

MISSED APPROACH: Climb to 1000 then climbing right turn to 2900 direct GVE VORTAC and hold, continue climb-in-hold to 2900.

AWOS-3 119.475	POTOMAC APP CON 132.85 323.125	UNICOM 122.975 (CTAF) 0
--------------------------	--	-----------------------------------



ELEV 494	TDZE 494
1000 2900 GVE	4 NM Holding Pattern
*LNAV only	JODKA 092° 6000 2900
LUYIS 2300	272° 2300
OVILY 1.4 NM to RW27	272° 2300
RW27	272° 2300
1.4 NM 4.2 NM 6 NM	GP 3.00° TCH 40
CATEGORY	A B C D
LPV DA	744-3/4 250 (300-3/4) NA
LNAV/VNAV DA	744-3/4 250 (300-3/4) NA
LNAV MDA	860-1 366 (400-1) NA
900-1 406 (500-1) 960-1 466 (500-1)	NA
CIRCLING	NA