

APP CRS	Rwy Idg	<b>2289</b>
<b>059°</b>	TDZE	<b>118</b>
	Apt Elev	<b>118</b>

## RNAV (GPS) RWY 6

POTOMAC AIRFIELD (VKX)

<div style="display: flex; align-items: center;"> <div style="margin-right: 10px;"> <div style="border: 1px solid black; padding: 2px; text-align: center;">T</div> <div style="border: 1px solid black; padding: 2px; text-align: center;">A</div> </div> <div>NA</div> </div>
---

Circling NA SE of Rwy 6-24. DME/DME RNP-0.3 NA. If local altimeter setting not received, use Joint Base Andrews altimeter setting and increase all MDAs 40 feet. Rwy 6 helicopter visibility reduction below 1 SM NA.

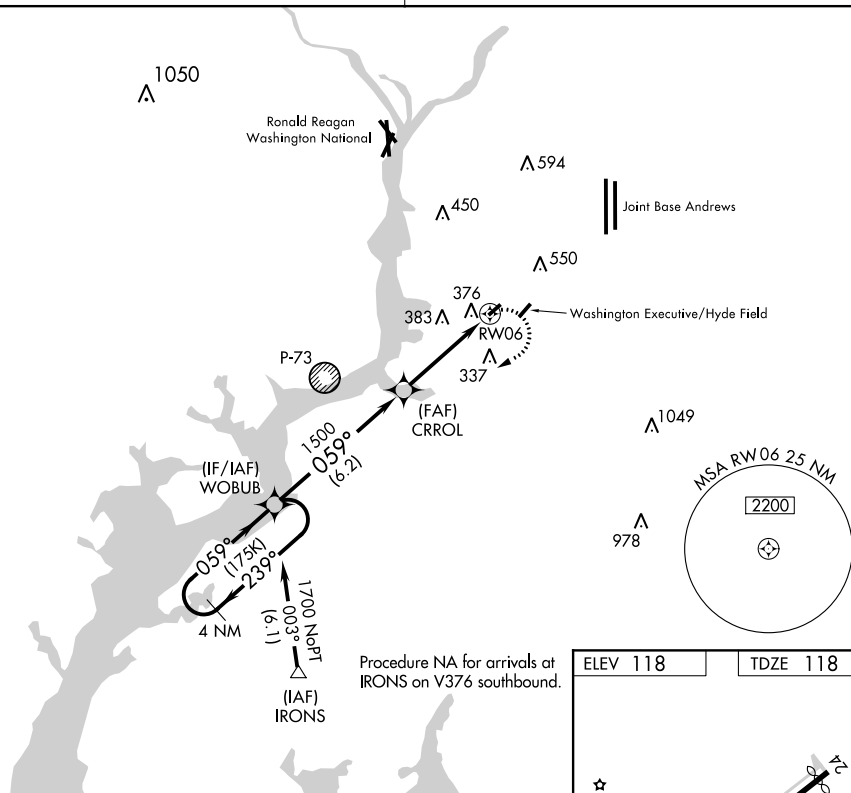
**MISSED APPROACH:** Climbing right turn to 1700 direct WOBUB and hold.

POTOMAC APP CON

124.7    338.2

UN|COM

### 122.8 (CTAF)



NE-3, 31 DEC 2020 to 28 JAN 2021

4 NM  
Holding Pattern

### Visual Segment - Obstacles.

1700

WOBUB

Energy : 2000

WOBUB

CRROI

1 500

RW06

CATEGORY

---

A

B

C

--	--

LNAV MDA

680-1  
562 (600-1)

NA

CIRCLING

740-1  
622 (700-1)

NA

MIRL Rwy 6-24

FRIENDLY, MARYLAND

Orig-A 22JUN17

38°45'N-76°57'W

POTOMAC AIRFIELD (VKX)

RNAV (GPS) RWY 6

NE-3, 31 DEC 2020 to 28 JAN 2021