

WAAS CH <b>63224</b> <b>W07A</b>	APP CRS <b>072°</b>	Rwy Idg <b>4299</b> TDZE <b>2653</b> Apt Elev <b>2653</b>
--	------------------------	---

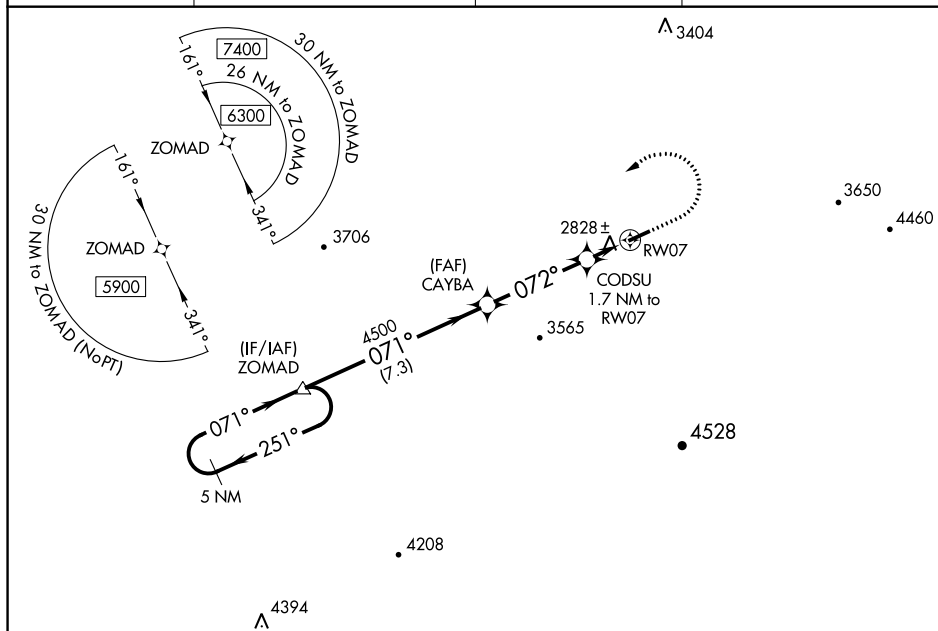
# RNAV (GPS) RWY 7

## TAZEVELL COUNTY (JFZ)

- ▼** DME/DME RNP-0.3 NA. Visibility reduction by helicopters NA. When local altimeter setting not received, use Wise altimeter setting and increase all MDA 100 feet, increase LP and LNAV Cat C visibility  $\frac{1}{2}$  mile and Circling Cat C visibility  $\frac{1}{2}$  mile. Procedure NA at night.
- ▲** Circling NA for Cat C south of Rwy 7-25.

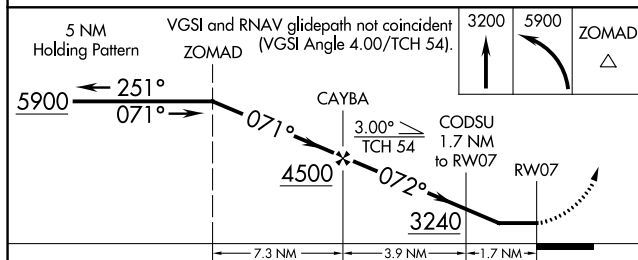
**MISSED APPROACH:** Climb to 3200 then climbing left turn to 5900 direct ZOMAD and hold, continue climb-in-hold to 5900.


AWOS-3 <b>118.075</b>	ATLANTA CENTER <b>127.85 269.3</b>	GCO <b>135.075</b>	UNICOM <b>123.05 (CTAF) 1</b>
--------------------------	---------------------------------------	-----------------------	----------------------------------



NE-3, 31 DEC 2020 to 28 JAN 2021

ELEV	2653		TDZE	2653
------	------	--	------	------



CATEGORY	A	B	C	D
LP MDA	3080-1	427 (500-1)	3080-1½ 427 (500-1½)	NA
LNAV MDA	3080-1	427 (500-1)	3080-1½ 427 (500-1½)	NA
 CIRCLING	3240-1	587 (600-1)	3240-1½ 587 (600-1½)	NA

