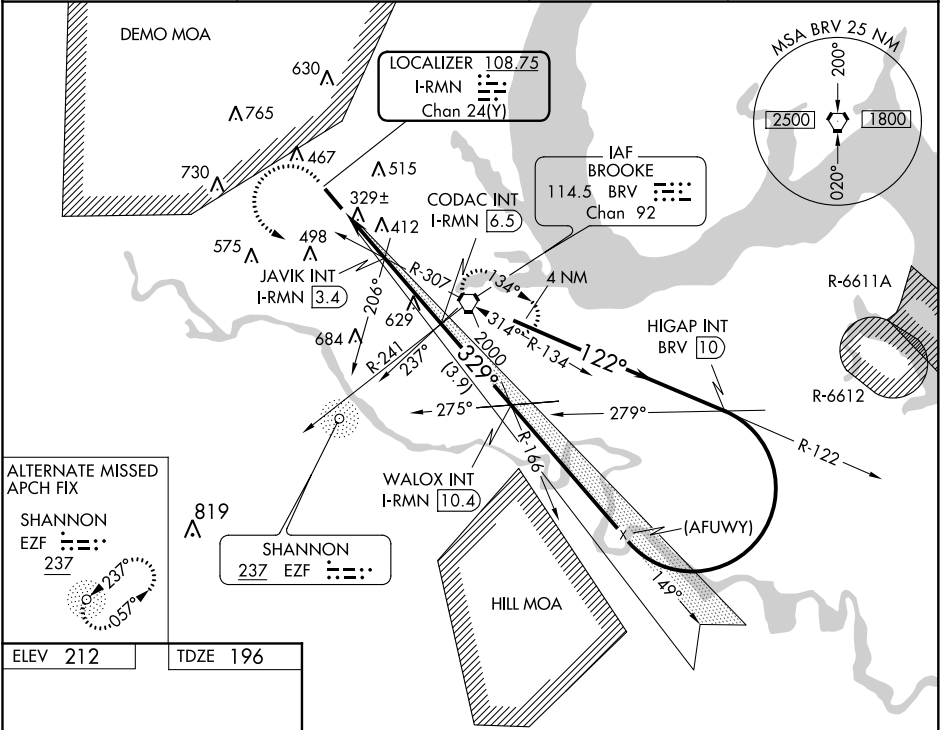


LOC/DME	I-RMN	APP CRS	Rwy Idg	5000
108.75		329°	TDZE	196
Chan 24 (Y)			Apt Elev	212

ILS or LOC RWY 33
STAFFORD RGNL (RMN)

<p>▽ If local altimeter setting not received, use Shannon, Fredericksburg, VA altimeter setting and increase all DH/MDAs 40 feet.</p> <p>△NA Inoperative table does not apply to S-ILS 33 and to S-LOC Cats B and C. DME or ADF required.</p>	<p>MALS</p> <p>A </p>	<p>MISSED APPROACH: Climb to 600 then climbing left turn to 2000 direct BRV VORTAC and hold.</p>
---	-------------------------------------	---

<p>AWOS-3</p> <p>126.325</p>	<p>POTOMAC APP CON ★</p> <p>127.05 290.375</p>	<p>GCO</p> <p>135.075</p>	<p>UNICOM</p> <p>122.725 (CTAF) ①</p>
-------------------------------------	---	----------------------------------	--

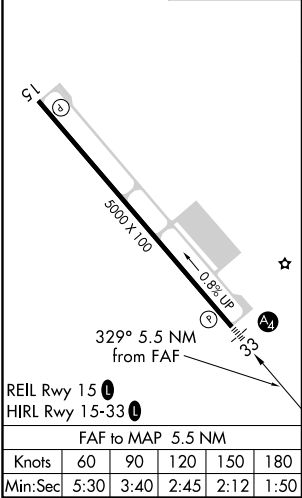


ALTERNATE MISSED APCH FIX

SHANNON

EZF 237

ELEV 212	TDZE 196
----------	----------



	600	2000	BRV	BRV VORTAC
*LOC only	JAVIK INT I-RMN 3.4	CODAC INT I-RMN 6.5	WALOX INT I-RMN 10.4	HIGAP INT BRV 10
	I-RMN 1	2000	329°	3000
	940 *†	2000	329°	3000
	2.4 NM	3.1 NM	3.9 NM	
CATEGORY	A	B	C	D
S-ILS 33		396-3/4	200 (200-3/4)	
S-LOC 33		580-3/4	384 (400-3/4)	580-1 1/4 384 (400-1 1/4)
CIRCLING	720-1 508 (600-1)	740-1 528 (600-1)	840-1 3/4 628 (700-1 3/4)	860-2 648 (700-2)

NE-3, 31 DEC 2020 to 28 JAN 2021

NE-3, 31 DEC 2020 to 28 JAN 2021