

STAFFORD, VIRGINIA

AL-9743 (FAA)

20310

WAAS CH 81805 W33A	APP CRS 329°	Rwy Idg 5000 TDZE 195 Apt Elev 211
--	------------------------	---

RNAV (GPS) RWY 33

STAFFORD RGNL (RMN)

RNP APCH.

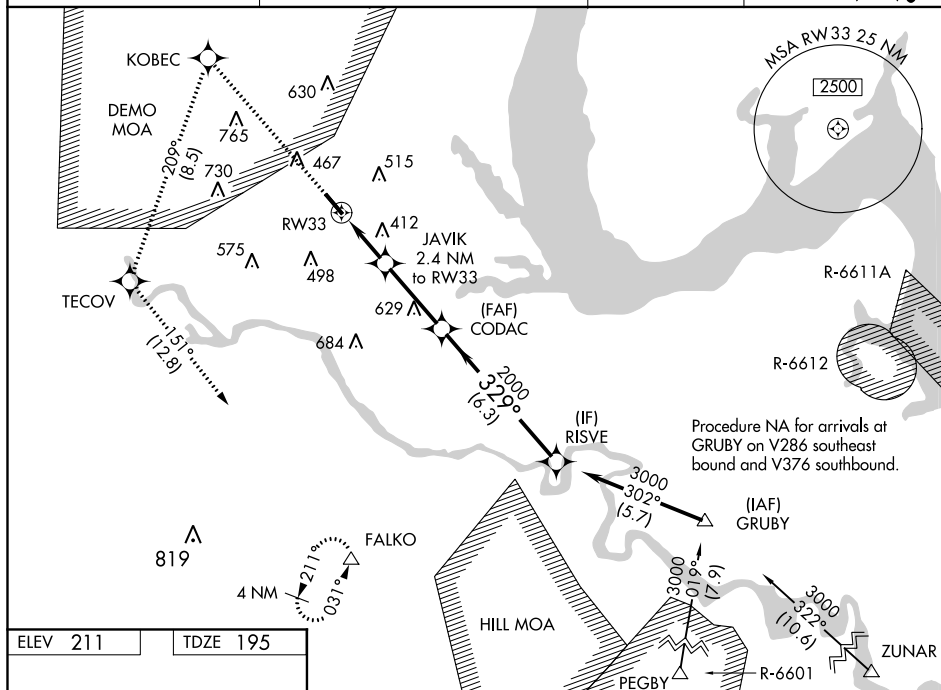
T Inop table does not apply to LPV all Cats. For uncompensated Baro-VNAV systems, LNAV/VNAV NA below -15°C or above 54°C. For inop ALS, increase LNAV Cat C/D visibility to 1 $\frac{3}{8}$ SM.

MALS



MISSED APPROACH: Climb to 4000
direct KOBEC and left turn on track
209° to TECOV and left turn on track
151° to FALKO and hold.

AWOS-3 126.325	POTOMAC APP CON ★ 127.05 290.375	GCO 135.075	UNICOM 122.725 (CTAF) 0
-------------------	-------------------------------------	----------------	----------------------------



ELEV 211	TDZE 195
----------	----------

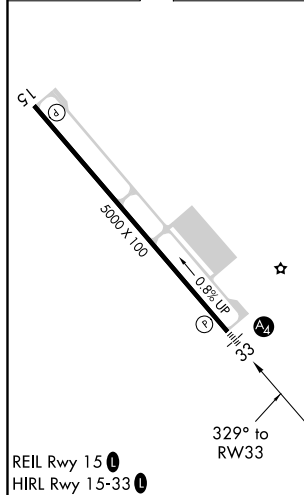


Diagram illustrating the RW33 instrument landing system (ILS) approach. The approach is a 329° descent from 3000 MSL to 2000 MSL, then a 329° descent to the runway threshold at 980 MSL. Key distances and altitudes are marked:

- 3000 MSL (RISVE)
- 2000 MSL (CODAC)
- 980 MSL (Runway Threshold)
- GP 3.05° TCH 46
- Distances: 1.5 NM, 0.9 NM, 3.1 NM, 6.3 NM
- Altitudes: 4000, 3000, 2000, 980
- Angles: 209°, 151°, 329°
- Labels: RW33, JAVIK, CODAC, RISVE, FALCO

STAFFORD, VIRGINIA

Amdt 1A 03JAN19

STAFFORD RGNL (RMN)

38°24'N - 77°27'W

RNAV (GPS) RWY 33

NE-3, 31 DEC 2020 to 28 JAN 2021

NE-3, 31 DEC 2020 to 28 JAN 2021