

APP CRS 298°	Rwy Idg TDZE Apt Elev	N/A N/A 34
------------------------	-----------------------------	---------------------------------------

RNAV (GPS)-A
LEE (ANP)

RNP APCH.

T When local altimeter setting not received, use Baltimore-Washington Intl
A altimeter setting and increase all MDA 60 feet. Procedure NA at night.
Helicopter visibility reduction below 1 SM NA.

MISSED APPROACH: Climbing left turn to 2000 direct AMRTN and hold.

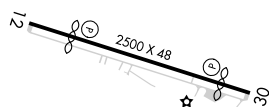
POTOMAC APP CON
119.7 290.475

CTAF
122.9 L

ELEV 34

MSA STRGL 25 NM

2600

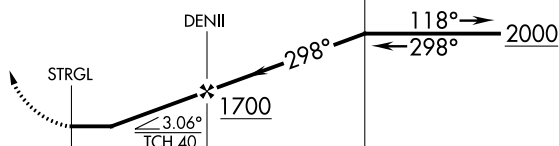


2000

AMRT

VGSI and descent angles not coincident (VGSI Angle 4.25/TCH 25).

APPENDIX

4 NM
Holding PatternLIRL Rwy 12-30 **L**

CATEGORY

A

B

1

D

CIRCLING

660-1 626 (700-1)

NA