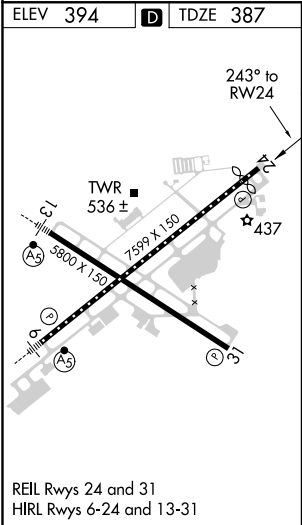
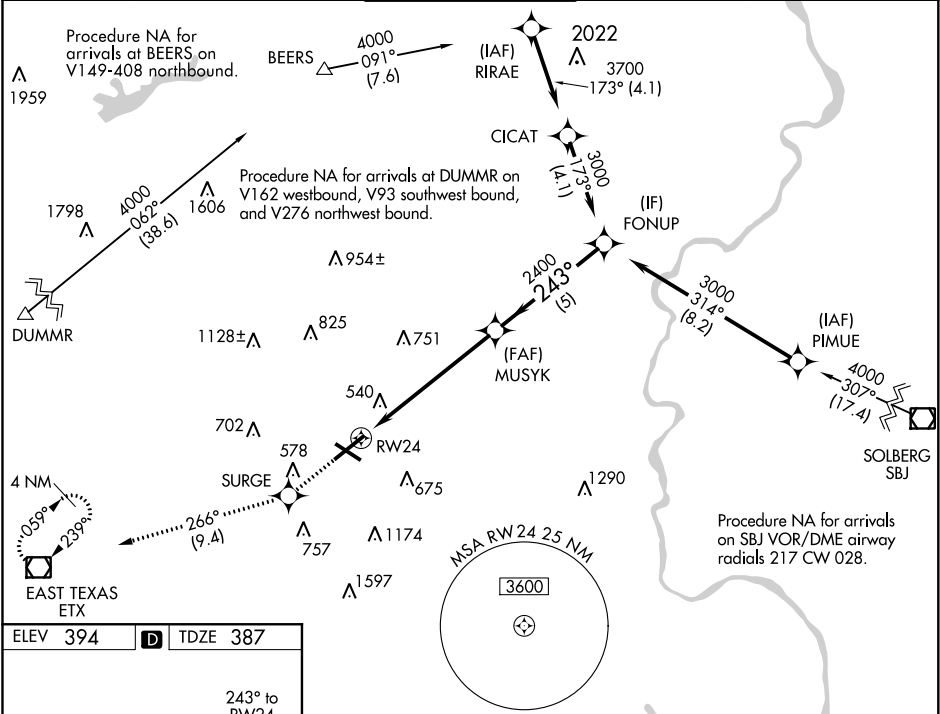


WAAS CH <b>40332</b> <b>W24A</b>	APP CRS <b>243°</b>	Rwy Idg TDZE <b>387</b> Apt Elev <b>394</b>	<b>7089</b> <b>387</b> <b>394</b>
--	------------------------	---	---

RNAV (GPS) RWY 24

LEHIGH VALLEY INTL (ABE)

RNP APCH. ▼ ▲ For uncompensated Baro-VNAV systems, LNAV/VNAV NA below -8°C (18°F) or above 54°C (130°F).		MISSED APPROACH: Climb to 3000 direct SURGE and on track 266° to ETX VOR/DME and hold.		
ATIS <b>126.975</b>	ALLENTOWN APP CON <b>119.65 124.45 351.8</b>	ALLENTOWN TOWER <b>120.5 257.95</b>	GND CON <b>121.9 257.95</b>	CLNC DEL <b>124.05 257.95</b>



3000	SURGE	Ir 266°	ETX	VGSI and RNAV glidepath not coincident (VGSI Angle 3.00/TCH 60).	
*LNAV only.				FONUP	
*1.3 NM to RW24				MUSYK 2400	3000
RW24				2400	GP 3.00° TCH 55
1.3 NM 4.9 NM 5 NM					
CATEGORY	A	B	C	D	
LPV DA	587/40		200 (200-¾)		
LNAV/VNAV DA	783-1¼		396 (400-1¼)		
LNAV MDA	860/55 473 (500-1)		860-1⅓ 473 (500-1⅓)		
<b>C</b> CIRCLING	900-1 506 (600-1)		1180-2¼ 786 (800-2¼) 1600-3 1206 (1300-3)		