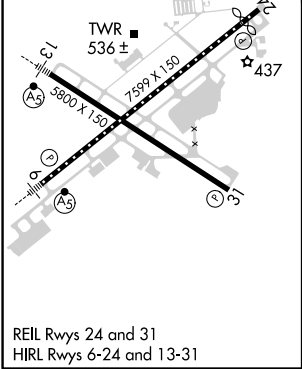
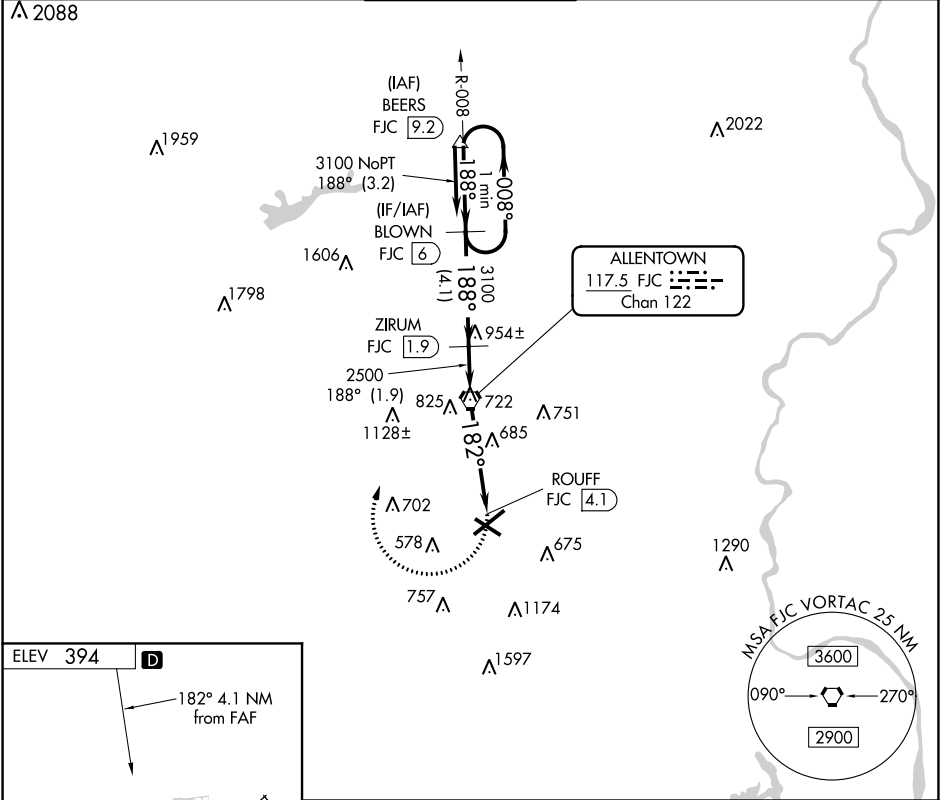


<div>▼</div> <div>▲ NA</div>		MISSED APPROACH: Climbing right turn to 3100 direct FJC VORTAC then via FJC R-008 to BLOWN/6 DME and hold.		
ATIS	ALLENTOWN APP CON			GND CON
126.975	119.65 124.45 351.8			121.9 257.95
		ALLENTOWN TOWER	CLNC DEL	
		120.5 257.95	124.05 257.95	



REIL Rwy 24 and 31
HIRL Rwy 6-24 and 13-31

