

LOC I-AOO <b>111.1</b>	APP CRS <b>206°</b>	Rwy Idg TDZE Apt Elev	<b>5465</b> <b>1486</b> <b>1503</b>
---------------------------	------------------------	-----------------------------	---

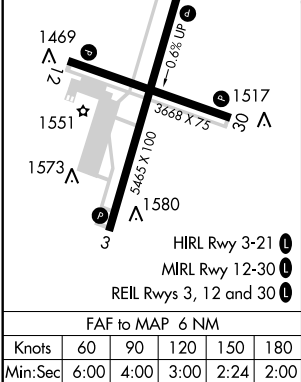
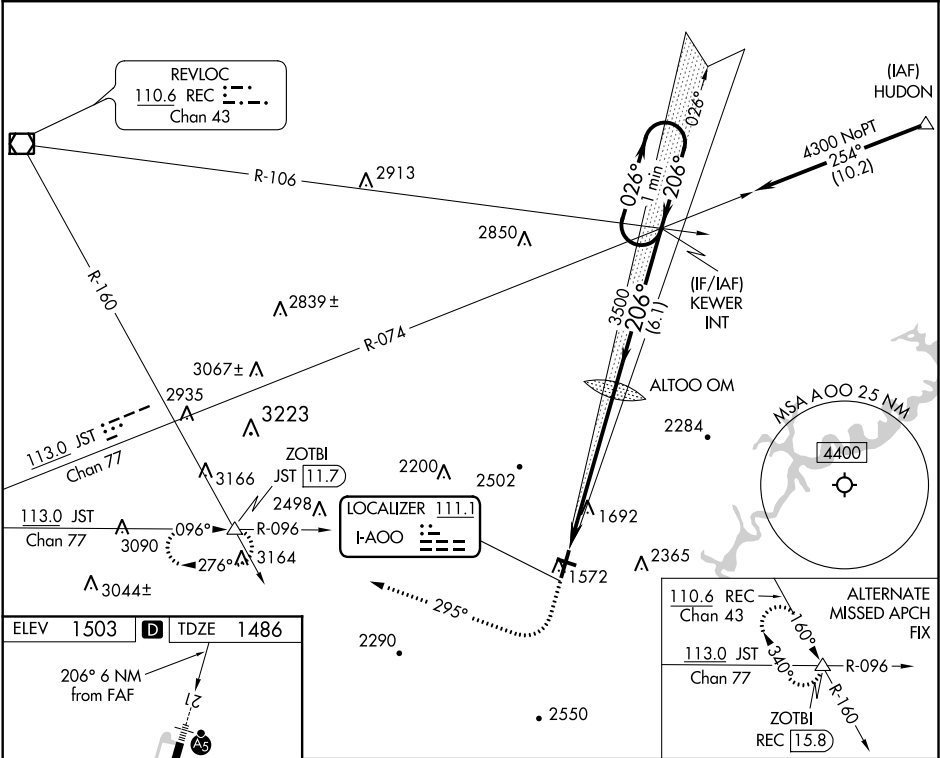
ILS or LOC RWY 21  
ALTOONA-BLAIR COUNTY (A00)

**⚠** Circling NA for Cats C, D northwest of Rwy 12 and 21. For inoperative ALS increase S-LOC 21 visibility Cats C and D to 2½ miles. Circling Rwy 3, 12, 30 NA at night.

**MALSR**

**MISSED APPROACH:** Climb to 2100, then climbing right turn to 5000 on heading 295° and JST R-096 to ZOTBI INT/JST 11.7 DME and hold, continue climb-in-hold to 5000.

ASOS <b>127.125</b>	JOHNSTOWN APP CON * <b>121.2 299.2</b>	CTAF <b>123.60</b>	UNICOM <b>123.0</b>
------------------------	---	-----------------------	------------------------



2100	5000	JST R-096	ZOTBI INT	KEWER INT	One Minute Holding Pattern
CATEGORY	A	B	C	D	
S-ILS 21	1686-1/2		200 (200-1/2)		
S-LOC 21	2240-1/2 754 (800-1/2)	2240-3/4 754 (800-3/4)	2240-1 3/4	754 (800-1 3/4)	
<b>C</b> CIRCLING	2240-1 737 (800-1)	2240-1 1/4 737 (800-1 1/4)	2800-3 1297 (1300-3)	2840-3 1337 (1400-3)	

NE-4, 31 DEC 2020 to 28 JAN 2021

NE-4, 31 DEC 2020 to 28 JAN 2021