

WAAS CH 90105 W21A	APP CRS 206°	Rwy Idg TDZE 1486 Apt Elev 1503
--	------------------------	---

RNAV (GPS) RWY 21
ALTOONA-BLAIR COUNTY (A00)

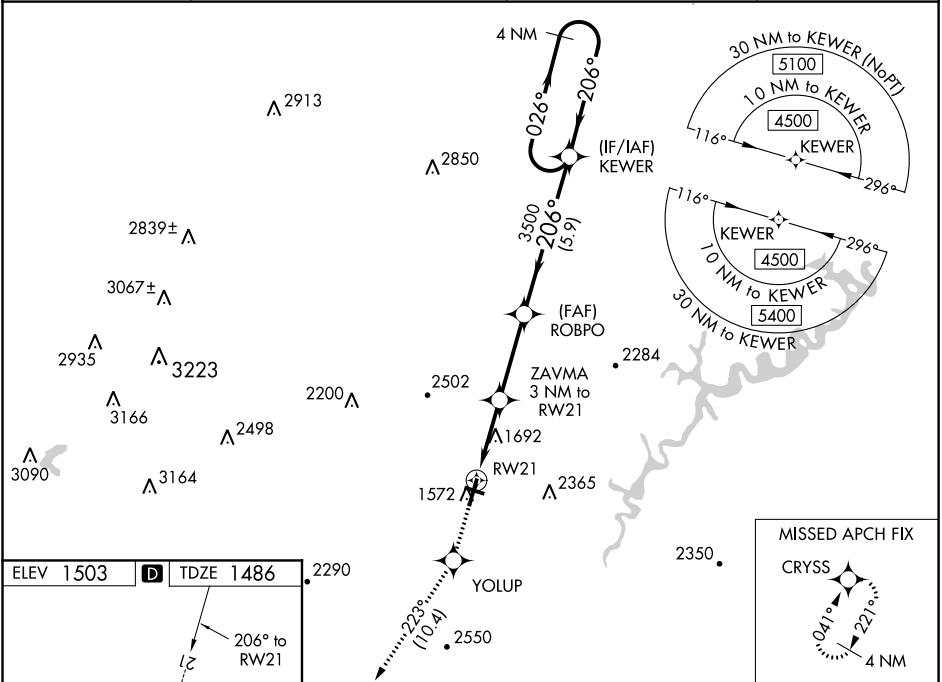
RNP APCH.

▼ Baro-VNAV NA when using Bedford County altimeter setting. For uncompensated Baro-VNAV systems, LNAV/VNAV NA below -17°C or above 54°C. For inoperative ALS, increase LPV visibility all Cats to 1½ SM. For inoperative ALS when using Bedford County altimeter setting, increase LPV and LNAV/VNAV all Cats visibility to 2 SM and increase LNAV Cats C/D visibility to 2 ½ SM. When local altimeter setting not received, use Bedford County altimeter setting; increase all DA 84 feet and all MDA 100 feet. Increase all LPV and LNAV/VNAV visibilities ¾ SM, LNAV Cats B, C and D and Circling Cat A ¼ SM. Circling Rwy 3, 12, 30 NA at night.

MALS

MISSED APPROACH:
Climb to 5000 direct YOLUP and on track 223° to CRYSS and hold, continue Climb-in-hold to 5000.

ASOS 127.125	JOHNSTOWN APP CON ★ 121.2 299.2	CTAF 123.60	UNICOM 123.0
------------------------	---	-----------------------	------------------------



ELEV 1503	D	TDZE 1486				
HIRL Rwy 3-21 1 MIRL Rwy 12-30 1 REIL Rws 3, 12, and 30 1						
5000 YOLUP tr 223° CRYSS 4 NM Holding Pattern KEWER 026° 4500 206° 3500 GP 3.00° TCH 52						
*LNAV only RWY 21 2 NM to RWY 21 1 NM to RWY 21 3.2 NM to RWY 21 5.9 NM to RWY 21						
ZAVMA 3 NM to RWY 21						
*2460						
CATEGORY A B C D						
LPV DA 1977-1 8 491 (500-1 8)						
LNAV/VNAV DA 1999-1 4 513 (500-1 4)						
LNAV MDA 2160-1 2 674 (700-1 2) 2160-1 2 674 (700-1 2)						
CIRCLING 2240-1 737 (800-1) 2240-1 4 737 (800-1 4) 2800-3 1297 (1300-3) 2840-3 1337 (1400-3)						

NE-4, 31 DEC 2020 to 28 JAN 2021

NE-4, 31 DEC 2020 to 28 JAN 2021