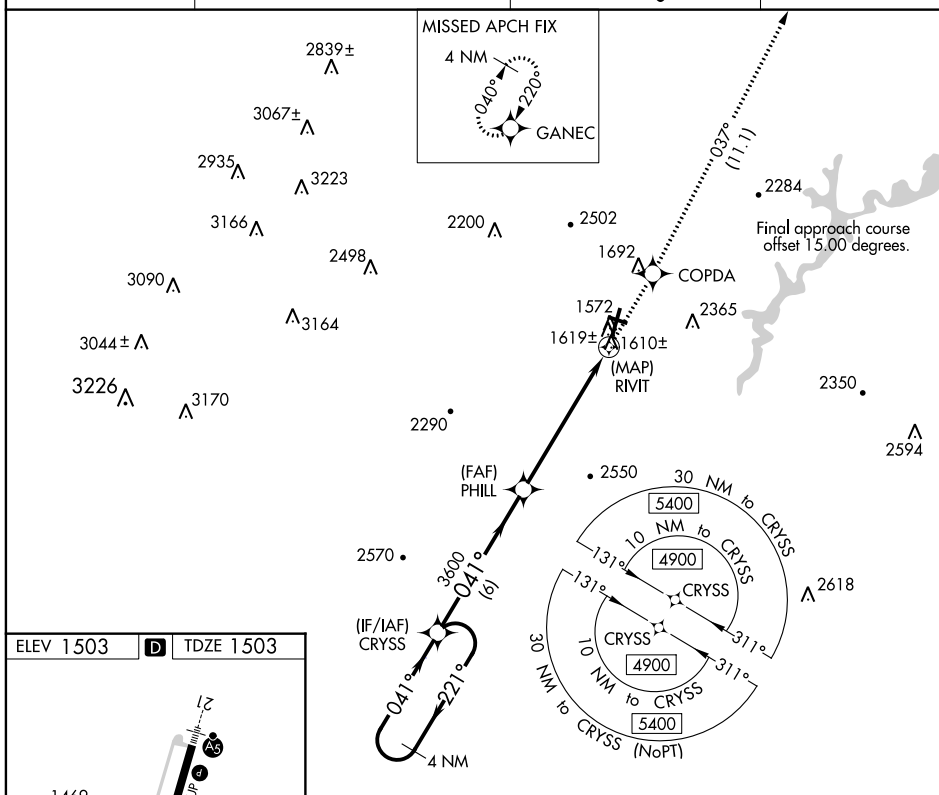


RNAV (GPS) Y RWY 3
ALTOONA-BLAIR COUNTY (A00)

T When local altimeter setting not received, use Bedford County altimeter setting, increase all MDA 100 feet. Increase LNAV and LP Cat C/D visibilities $\frac{3}{8}$ SM and Circling Cat A $\frac{1}{4}$ SM.
A Rwy 3, helicopter visibility reduction below $\frac{3}{4}$ SM NA. Circling NA to Rwys 12 and 30. VDP NA when using Bedford County altimeter setting.

MISSED APPROACH: Climb to 5000 direct COPDA on track 037° to GANEC and hold, continue climb-in-hold to 5000.

UNICOM
123.0

- HIRL Rwy 3-21 **L**
- HIRL Rwy 12-30 **L**
- 3, 12, and 30 **L**

<div><div>4 NM Holding Pattern</div><div>CRYSS</div><div><div>4900</div><div>← 221°</div><div>041° →</div><div>041°</div><div>3600</div><div>3.00°</div><div>TCH 43</div><div>6 NM</div><div>5.4 NM</div><div>0.6</div><div>0.5</div><div>0.6 NM to RIVIT</div><div>RIVIT</div><div>PHILL</div><div>5000</div><div>COPDA</div><div>tr 037°</div><div>GANEC</div></div></div>				
CATEGORY	A	B	C	D
LP MDA	1860-1 357 (400-1)			
LNAV MDA	1880-1 377 (400-1)			
C CIRCLING	2240-1 737 (800-1)	2240-1½ 737 (800-1½)	2800-3 1297 (1300-3)	2840-3 1357 (1400-3)