

WAAS CH <b>86812</b> <b>W24A</b>	APP CRS <b>245°</b>	Rwy Idg TDZE Apt Elev	<b>7501</b> <b>730</b> <b>732</b>
--	------------------------	-----------------------------	---

RNAV (GPS) RWY 24

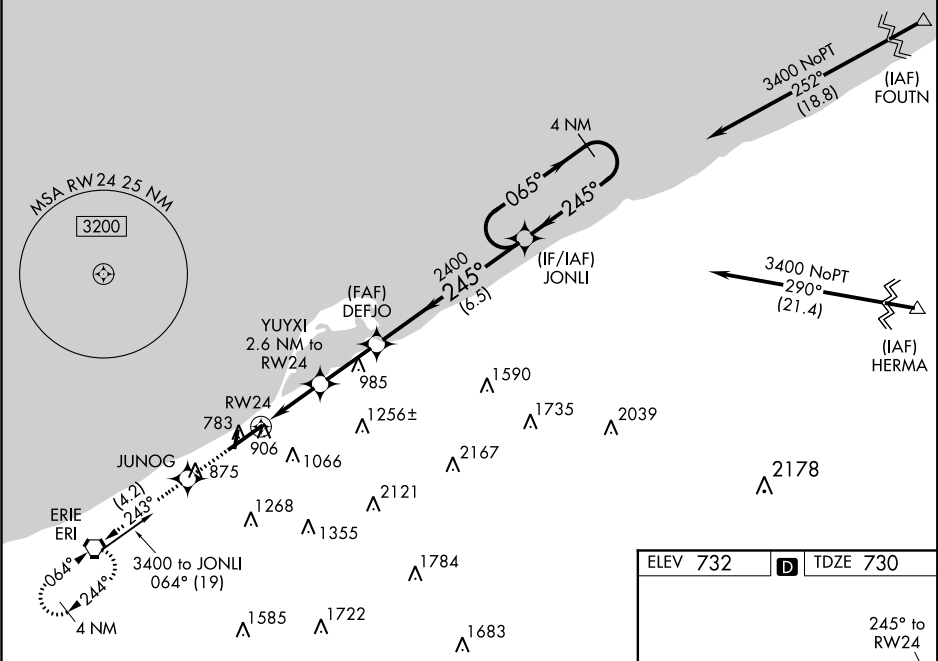
ERIE INTL/TOM RIDGE FIELD (ERI)

⚠ Night landing: Rwy 2, 20 NA. Baro-VNAV NA when using Ashtabula, OH altimeter setting. For uncompensated Baro-VNAV systems, LNAV/VNAV NA below -19°C (-2°F) or above 54°C (130°F). DME/DME RNP-0.3 NA. VDP NA with Ashtabula, OH altimeter setting. When local altimeter setting not received, use Ashtabula, OH altimeter setting and increase all DA 96 feet, all MDA 100 feet and increase LPV all Cats visibility ⅓ mile, LNAV/VNAV all Cats visibility ⅓ mile, LNAV Cats C and D visibility ¼ mile and Circling Cat C and D visibility ½ mile. For inop MALS when using Ashtabula, OH altimeter setting, increase LPV all Cats visibility to 1⅓ mile.

MALS

MISSED APPROACH:  
 Climb to 3000 direct JUNOG and on track 243° to ERI VORTAC and hold.

ATIS <b>120.35</b>	BUFFALO APP CON ★ <b>121.0 257.8</b>	ERIE TOWER ★ <b>118.1 (CTAF) 0 257.8</b>	GND CON <b>121.9</b>	CLNC DEL <b>126.8</b>	UNICOM <b>122.95</b>
-----------------------	---	---	-------------------------	--------------------------	-------------------------



3000	JUNOG	tr 243°	ERI
*LNAV only.	YUYXI 2.6 NM to RW24	DEFJO 2400	JONLI 4 NM Holding Pattern
	*1.2 NM to RW24	2400	065°→ 3400
		245°	← 245°
		*1600	GP 3.00° TCH 55
	1.2 NM	1.4 NM	2.5 NM
CATEGORY	A	B	C
LPV DA		987-1/2	257 (300-1/2)
LNAV/VNAV DA		1073-5/8	343 (400-5/8)
LNAV MDA	1160-1/2	430 (500-1/2)	1160-3/4 430 (500-3/4)
CIRCLING	1320-1 588 (600-1)	1340-1 608 (700-1)	1380-1 3/4 648 (700-1 3/4) 1380-2 648 (700-2)

