

WAAS CH <b>70610</b> <b>W08A</b>	APP CRS <b>082°</b>	Rwy Idg TDZE <b>342</b> Apt Elev <b>347</b>
--	------------------------	---

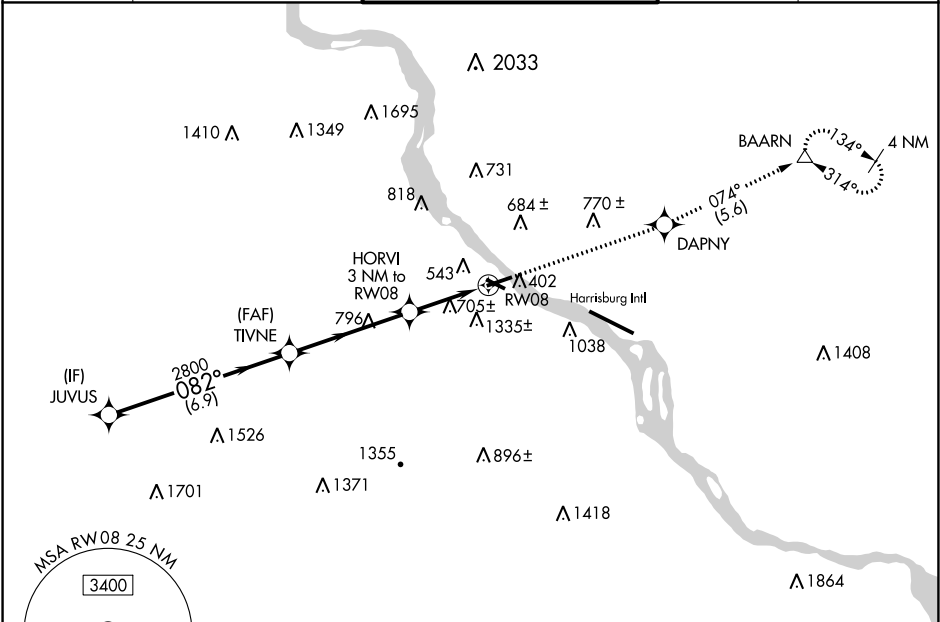
RNAV (GPS) RWY 8  
CAPITAL CITY (CXY)

**⚠** DME/DME RNP-0.3 NA. When local altimeter setting not received, use Harrisburg Intl altimeter setting. For inop MALS, increase LPV all Cats visibility to 1½ mile and increase LNAV Cat C, D visibility to 1¾ mile. Helicopter visibility reduction below 1 SM NA. Procedure NA at night.

MALS

MISSED APPROACH: Climb to 3000 direct DAPNY and on track 074° to BAARN and hold.

ATIS <b>134.95</b>	HARRISBURG APP CON <b>124.1 273.525</b>	CAPITAL CITY TOWER ★ <b>119.5 (CTAF) 0 257.8</b>	GND CON <b>121.9</b>	UNICOM <b>122.95</b>
-----------------------	--	---	-------------------------	-------------------------



**RADAR REQUIRED**

ELEV 347	TDZE 342
----------	----------

CATEGORY	A	B	C	D
LPV DA	833-1¼ 491 (500-1¼)			
LNAV MDA	960-1 625 (700-1)	960-1¾ 625 (700-1¾)		
CIRCLING	1200-1¼ 853 (900-1¼)	1700-1½ 1353 (1400-1½)	1700-3 1353 (1400-3)	

REIL Rwy 12 and 30  
HIRL Rwy 8-26  
MIRL Rwy 12-30

NE-4, 31 DEC 2020 to 28 JAN 2021

NE-4, 31 DEC 2020 to 28 JAN 2021