

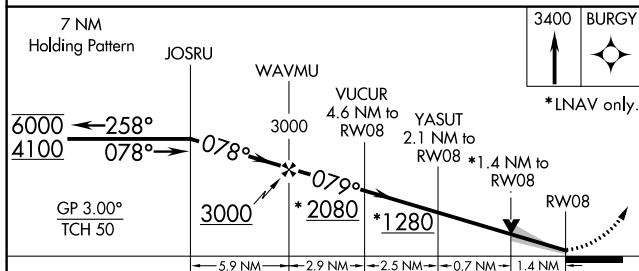
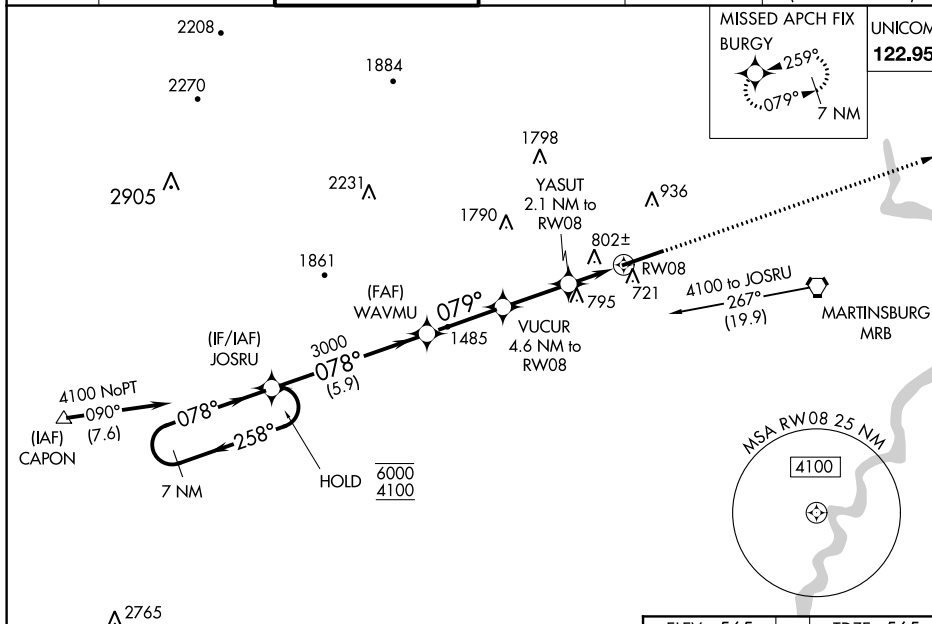
# RNAV (GPS) RWY 8

## EASTERN WV RGNL/SHEPHERD FIELD (MRB)

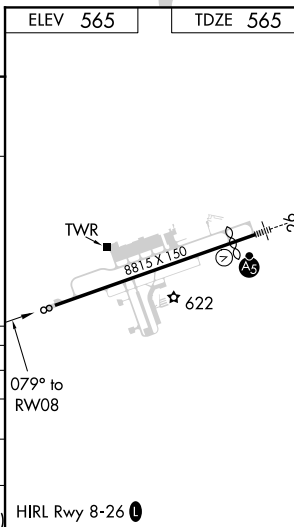
! For uncompensated Baro-VNAV systems, LNAV/VNAV NA below -14°C or above 54°C.

**MISSED APPROACH:**  
Climb to 3400 direct  
BURGY and hold.

ASOS 119.925	POTOMAC APP CON 126.825 239.025	MARTINSBURG TOWER ★ 124.3 (CTAF) 0 233.7	GND CON 121.8 257.65	CLNC DEL 121.8 257.65	CLNC DEL 132.075 269.075 (When twr closed)
-----------------	------------------------------------	---	-------------------------	--------------------------	--



CATEGORY	A	B	C	D	E
LPV DA	815- <sup>3</sup> / <sub>4</sub>		250 (300- <sup>3</sup> / <sub>4</sub> )		
LNAV/ VNAV	998-1 <sup>1</sup> / <sub>4</sub>		433 (500-1 <sup>1</sup> / <sub>4</sub> )		
LNAV MDA	1060-1 495 (500-1)		1060-1 <sup>3</sup> / <sub>8</sub> 495 (500-1 <sup>3</sup> / <sub>8</sub> )		
<b>C</b> CIRCLING	1100-1 535 (600-1)	1240-1 675 (700-1)	1240-2 675 (700-2)	1260-2 <sup>1</sup> / <sub>4</sub> 695 (700-2 <sup>1</sup> / <sub>4</sub> )	2140-3 1575 (1600-3)



NE-4, 31 DEC 2020 to 28 JAN 2021

NE-4, 31 DEC 2020 to 28 JAN 2021