

VORTAC

MRB

112.1

Chan 58

APP CRS

290°

Rwy Idg

TDZE

Apt Elev

N/A

N/A

565

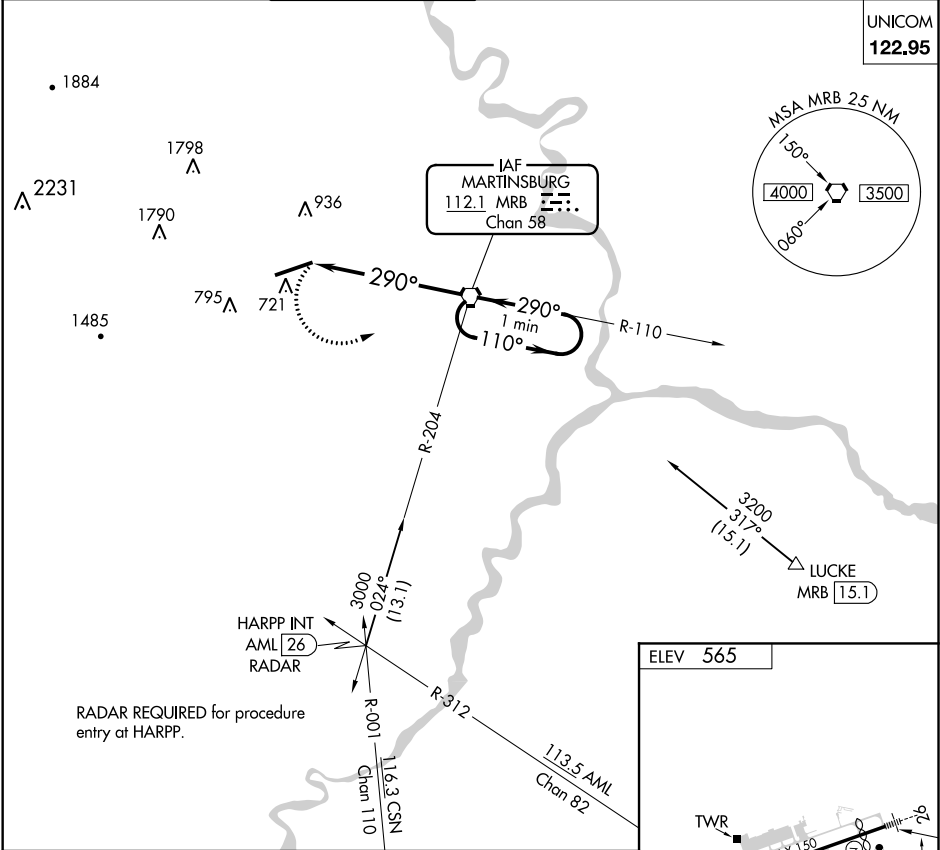
VOR-A

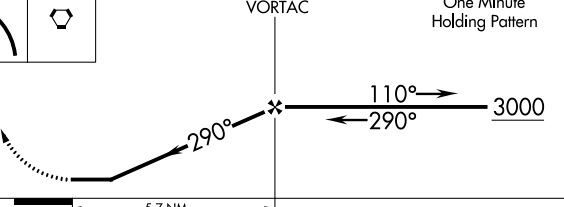

EASTERN WV RGNL/SHEPHERD FIELD (MRB)

When local altimeter setting not received, use Hagerstown altimeter setting and increase all MDA 80 feet and Cat C/D visibility ¼ mile.

MISSED APPROACH: Climbing left turn to 3000 direct MRB VORTAC and hold, continue climb in hold to 3000.

ASOS 119.925	POTOMAC APP CON 126.825 239.025	MARTINSBURG TOWER ★ 124.3 (CTAF) 233.7	GND CON 121.8 257.65	CLNC DEL 121.8 257.65	CLNC DEL 132.075 269.075 (When twr closed)
-----------------	------------------------------------	---	-------------------------	--------------------------	--



<div>3000</div> <div>MRB</div>		<div>MRB VORTAC</div> <div>One Minute Holding Pattern</div>		<div></div>		<div></div>					
CATEGORY		A	B	C	D	E	FAF to MAP 5.7 NM				
CIRCLING	1120-1	1240-1	1240-2	1260-2¼	2140-3	Knots	60	90	120	150	180
	555 (600-1)	675 (700-1)	675 (700-2)	695 (700-2¼)	1575 (1600-3)	Min:Sec	5:42	3:48	2:51	2:17	1:54