
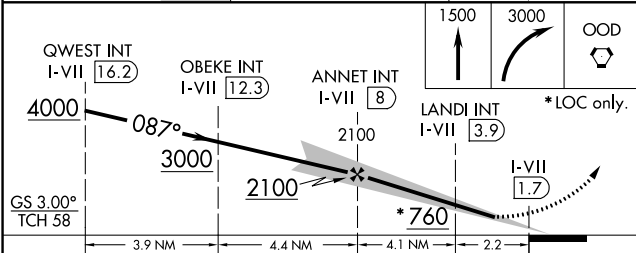
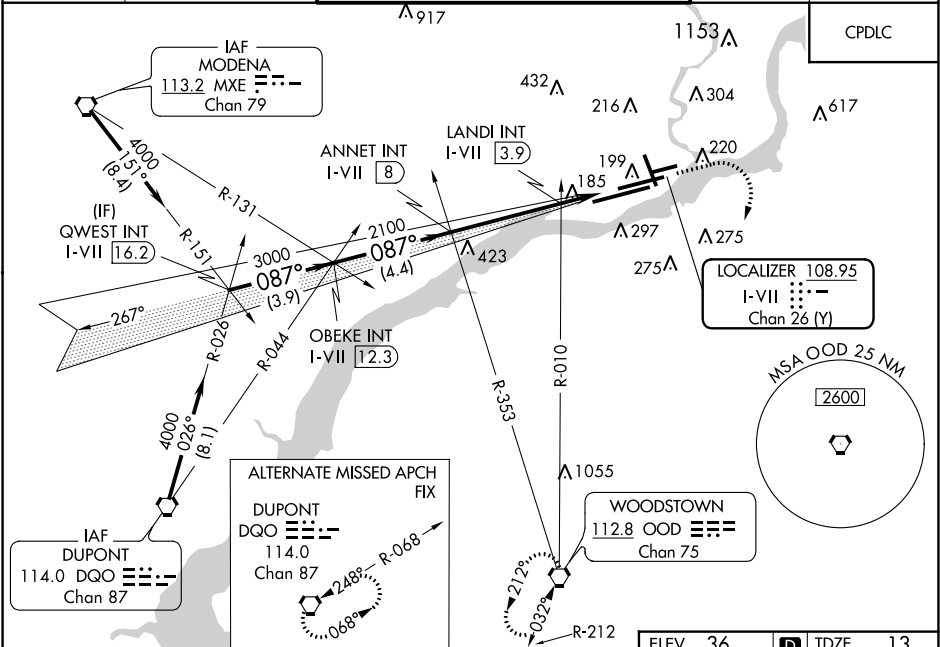


| | | | |
|---------------|-------------|----------|-----------|
| LOC/DME I-VII | APP CRS | Rwy Idg | 9500 |
| 108.95 | 087° | TDZE | 13 |
| Chan 26 (Y) | | Apt Elev | 36 |

ILS or LOC RWY 9L

PHILADELPHIA INTL (PHL)

| | | | | |
|---|---|--|--|--|
| <div><div>▼</div><div>▲</div></div> <div>For inop ALS, increase S-LOC 9L Cat C visibility to 2 SM. **RVR 1800 authorized with the use of FD or AP or HUD to DA.</div> | <div>MALSR</div> <div></div> | MISSED APPROACH: Climb to 1500 then climbing right turn to 3000 direct OOD VORTAC and hold. | | |
| <div>D-ATIS</div> <div>ARR 133.4</div> <div>DEP 135.925</div> | <div>PHILADELPHIA APP CON</div> <div>124.35 319.15</div> | <div>PHILADELPHIA TOWER</div> <div>118.5 327.05 (Rwys 9L/27R, 8/26 and 17/35)</div> <div>135.1 327.05 (Rwy 9R/27L)</div> | <div>GND CON</div> <div>121.9 348.6</div> | <div>CLNC DEL</div> <div>118.85 348.6</div> |



| CATEGORY | A | B | C | D |
|--------------------|----------------------|------------------------|------------------------|------------------------|
| S-ILS 9L ** | 213/24 200 (200-½) | | | |
| S-LOC 9L | 760/24 | 747 (800-½) | 760-1¾ 747 (800-1¾) | 760-2 747 (800-2) |
| CIRCLING | 760-1 724 (800-1) | 760-1¼ 724 (800-1¼) | 760-2¼ 724 (800-2¼) | 760-2½ 724 (800-2½) |
| LANDI FIX MINIMUMS | | | | |
| S-LOC 9L | 440/24 | 427 (500-½) | 440/40 427 (500-¾) | 440/50 427 (500-1) |
| CIRCLING | 540-1 504 (600-1) | 640-1 604 (700-1) | 640-1¾ 604 (700-¾) | 640-2 604 (700-2) |

