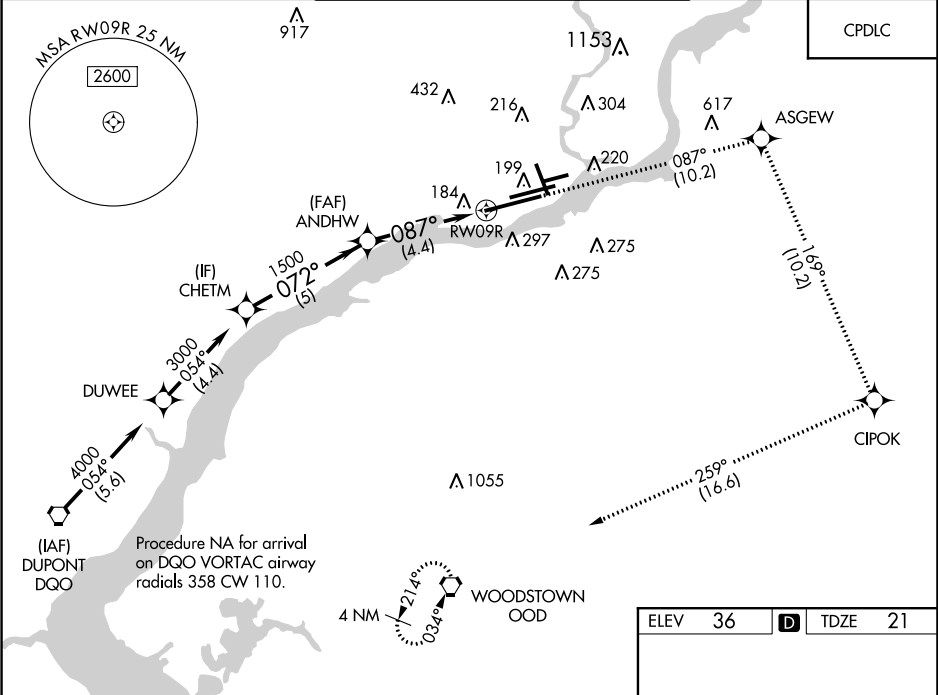


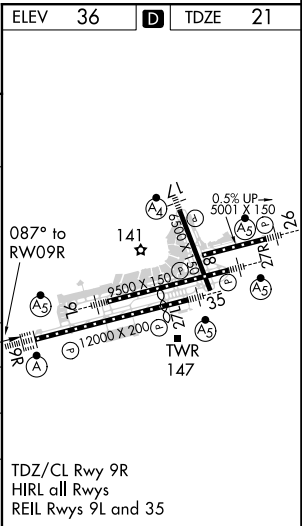
APP CRS	Rwy Idg	12000
087°	TDZE	21
	Apt Elev	36

RNAV (RNP) Z RWY 9R  
PHILADELPHIA INTL (PHL)

<p>▼ For uncompensated Baro-VNAV systems, procedure NA below -12°C (10°F) or above 54°C (130°F). For inop ALS, increase RNP 0.16 all Cats visibility to RVR 4500 and RNP 0.30 all Cats visibility to 1½ SM. Rwy 9R helicopter visibility reduction below RVR 4000 NA.</p>		ALSF-2	MISSED APPROACH: Climb to 3000 on track 087° to ASGEW and on track 169° to CIPOK, and on track 259° to OOD VORTAC and hold.	
D-ATIS	PHILADELPHIA APP CON	PHILADELPHIA TOWER		GND CON
ARR 133.4	124.35 319.15	118.5 327.05 (Rwys 9L/27R, 8/26 and 17/35)		121.9 348.6
DEP 135.925		135.1 327.05 (Rwy 9R/27L)		118.85 348.6



CHETM		3000 ↑ tr 087°		ASGEW ✧ tr 169°		CIPOK ✧ tr 259°		OOD ◡	
VGSi and RNAV glidepath not coincident (VGSi Angle 3.00/TCH 72).									
3000		072°		1500		087°		RW09R	
GP 3.00° TCH 58		5 NM		4.4 NM					
CATEGORY	A	B	C	D					
RNP 0.16 DA	284/40		263 (300-¾)						
RNP 0.30 DA	460/50		439 (500-1)						



AUTHORIZATION REQUIRED

NE-4, 31 DEC 2020 to 28 JAN 2021

NE-4, 31 DEC 2020 to 28 JAN 2021