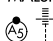
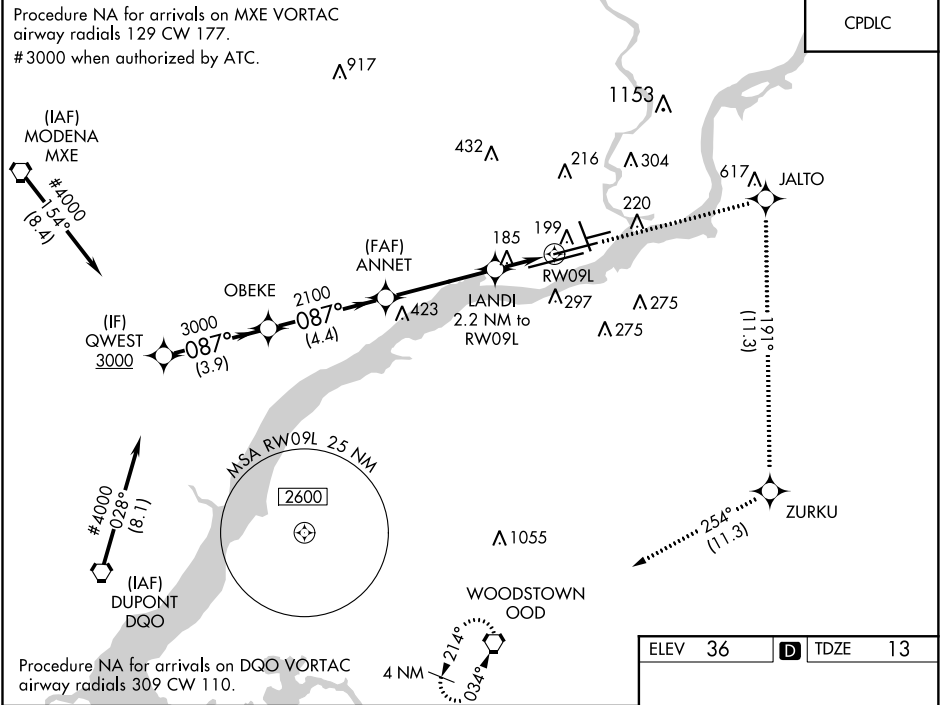






WAAS CH <b>45523</b> <b>W09B</b>	APP CRS <b>087°</b>	Rwy Idg TDZE <b>13</b> Apt Elev <b>36</b>
--	------------------------	---

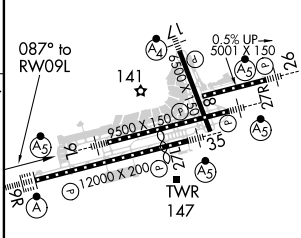
RNAV (GPS) Y RWY 9L  
PHILADELPHIA INTL (PHL)

▼ For uncompensated Baro-VNAV systems, LNAV/ VNAV NA below -12°C (11°F) or above 54°C (130°F). DME/DME RNP-0.3 NA.		MALSR 	MISSED APPROACH: Climb to 3000 direct JALTO and right turn on track 191° to ZURKU and on track 254° to OOD VORTAC and hold.		
D-ATIS ARR <b>133.4</b> DEP <b>135.925</b>	PHILADELPHIA APP CON <b>124.35 319.15</b>	PHILADELPHIA TOWER <b>118.5 327.05</b> (Rwys 9L/27R, 8/26 and 17/35) <b>135.1 327.05</b> (Rwy 9R/27L)		GND CON <b>121.9 348.6</b>	CLNC DEL <b>118.85 348.6</b>



#3000 when authorized by ATC.	3000	JALTO	ZURKU	OOD
				
		tr 191°	tr 254°	
		*LNAV only.		
QWEST	OBEKE	ANNET	LANDI	
#4000	3000		2.2 NM to RWY09L	
GP 3.00° TCH 58			*1.2 NM to RWY09L	
			RWY09L	
	3.9 NM	4.4 NM	4.1 NM	1 NM 1.2 NM
CATEGORY	A	B	C	D
LPV DA		263/24	250 (300-½)	
LNAV/ VNAV DA		471/50	458 (500-1)	
LNAV MDA	440/24	427 (500-½)	440/40 427 (500-¾)	440/50 427 (500-1)
CIRCLING	540-1 504 (600-1)	640-1 604 (700-1)	640-1¾ 604 (700-1¾)	640-2 604 (700-2)

ELEV 36 TDZE 13



087° to RWY09L  
0.5% UP  
5001 X 150  
27R  
35  
TWR 147  
12000 X 200  
12000 X 200

TDZ/CL Rwy 9R  
HIRL all Rwys  
REIL Rwys 9L and 35

NE-4, 31 DEC 2020 to 28 JAN 2021

NE-4, 31 DEC 2020 to 28 JAN 2021