

ALLEGHENY NINE DEPARTURE

ATIS  
120.55  
GND CON  
121.7  
ALLEGHENY TOWER  
121.1 239.0  
PITTSBURGH DEP CON  
119.35 285.575 337.4

BRIGGS  
112.4 BSV  
Chan 71  
N40°44.44'-W81°25.93'  
L-29, H-10

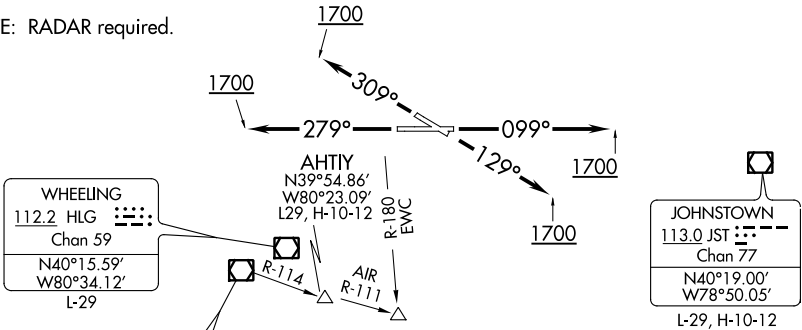
AKRON  
114.4 ACO  
Chan 91  
N41°06.47'  
W81°12.09'  
L-30, H-10

FRANKLIN  
109.6 FKL  
N41°26.31'  
W79°51.40'  
L-30, H-10

ELLWOOD CITY  
115.8 EWC  
Chan 105  
N40°49.50'-W80°12.69'  
L-29, H-10

TYROO

NOTE: RADAR required.



TAKEOFF MINIMUMS  
Rwys 10, 28, 31: Standard.  
Rwy 13: Standard with minimum  
climb of 205' per NM to 1800.

DEPARTURE ROUTE DESCRIPTION  
TAKEOFF RUNWAY 10: Climb heading 099° until 1700 thence....  
TAKEOFF RUNWAY 13: Climb heading 129° until 1700 thence....  
TAKEOFF RUNWAY 28: Climb heading 279° until 1700 thence....  
TAKEOFF RUNWAY 31: Climb heading 309° until 1700 thence....  
....expect vectors to assigned route/fix. Maintain 3000. Expect further  
clearance to requested altitude 10 minutes after departure.

NOTE: Chart not to scale.

ALLEGHENY NINE DEPARTURE