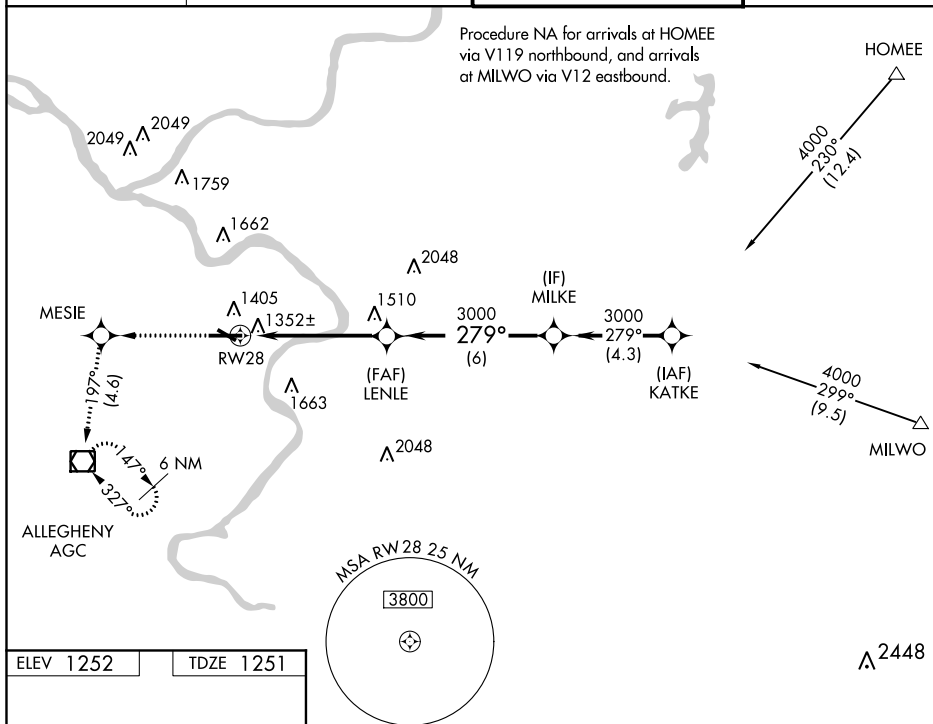


RNAV (GPS) RWY 28

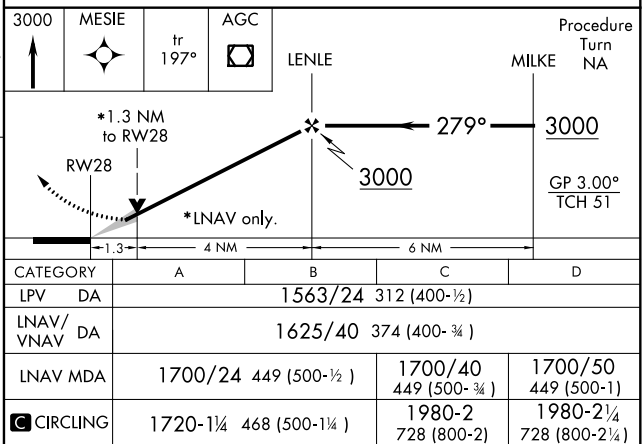
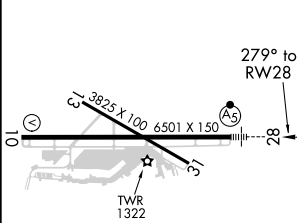
ALLEGHENY COUNTY (AGC)

MISSED APPROACH: Climb to 3000
direct MESIE and via 197° track to
AGC VOR/DME and hold.

GND CON
121.7



TDZE 1251



ALLEGHENY COUNTY (AGC)
RNAV (GPS) RWY 28