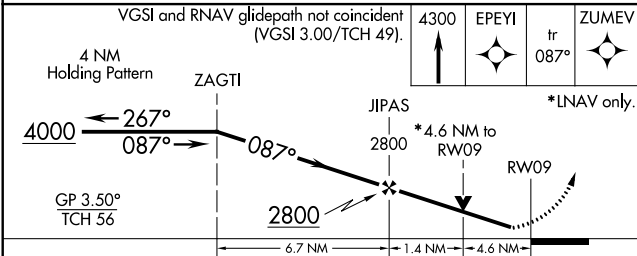
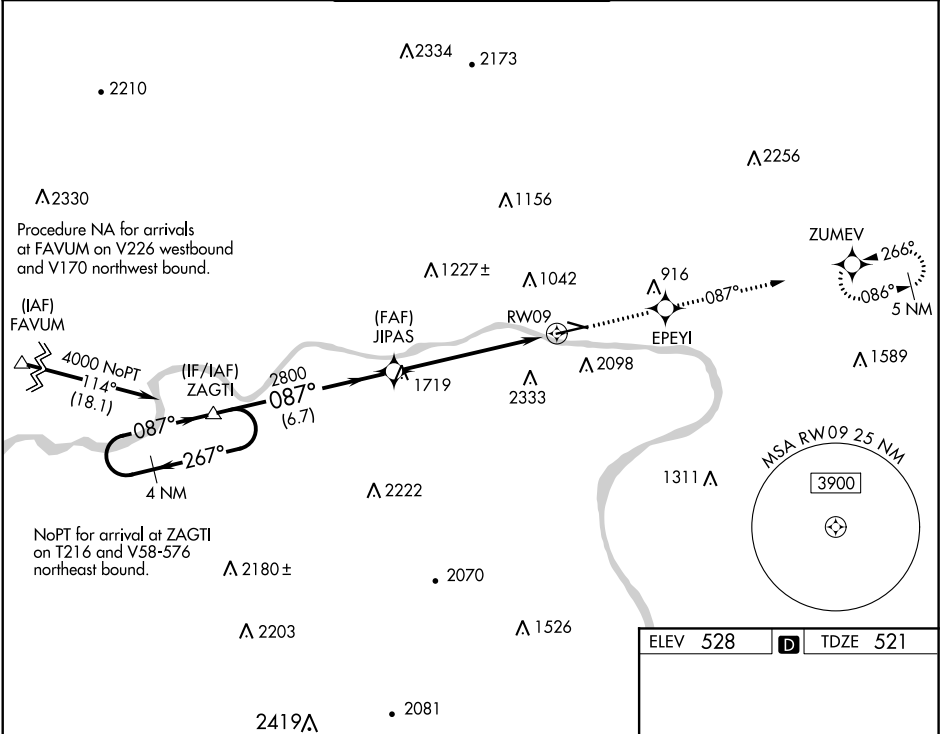


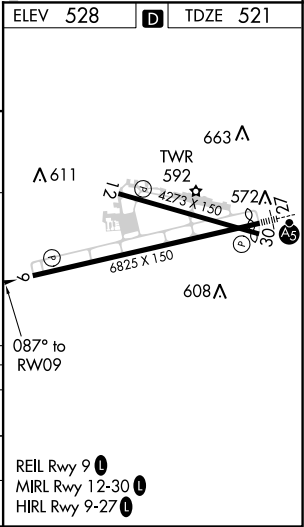
WAAS CH 86924 W09A	APP CRS 087°	Rwy Idg 6073 TDZE 521 Apt Elev 528
--	------------------------	---

RNAV (GPS) RWY 9
WILLIAMSPORT RGNL (IPT)

<div><div><div>▼</div><div>⚠</div><div>❄</div></div><div>-10°C</div></div> <div>DME/DME RNP-0.3 NA. Circling Rwy 12, 30 NA at night. Circling NA south of Rwy 9 and southwest of Rwy 30. Rwy 9 helicopter visibility reduction below ¾ SM NA.</div> <div>MISSED APPROACH: Climb to 4300 direct EPEYI and on track 087° to ZUMEV and hold, continue climb-in-hold to 4300.</div>				
ASOS 125.225	NEW YORK CENTER 124.9	WILLIAMSPORT TOWER ★ 119.1 (CTAF) 257.8	GND CON 121.9	UNICOM 122.95



CATEGORY	A	B	C	D
LPV DA	1036-1½	515 (600-1½)		NA
ILNAV MDA	2040-1¼ 1519 (1600-1¼)	2040-1½ 1519 (1600-1½)	2040-3 1519 (1600-3)	NA
Ⓢ CIRCLING	2040-1¼ 1512 (1600-1¼)	2040-1½ 1512 (1600-1½)	2040-3 1512 (1600-3)	NA



NE-4, 31 DEC 2020 to 28 JAN 2021

NE-4, 31 DEC 2020 to 28 JAN 2021