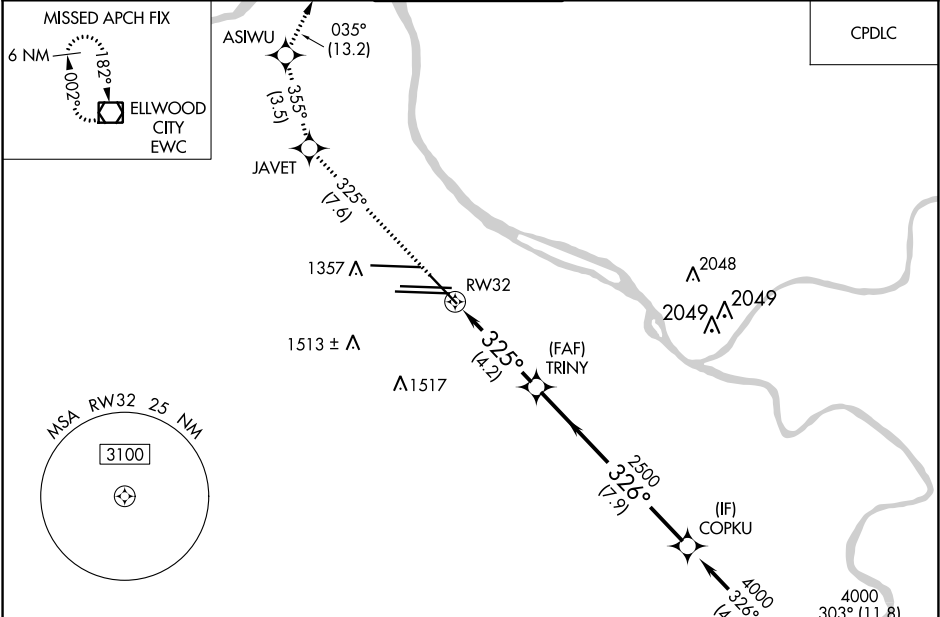


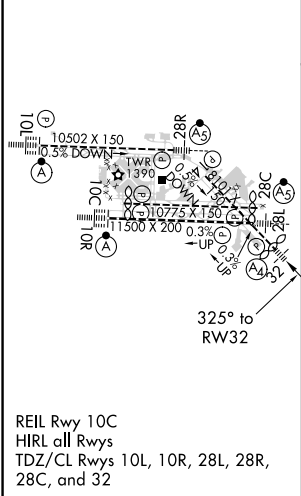
APP CRS	Rwy ldg	7466
325°	TDZE	1124
	Apt Elev	1203

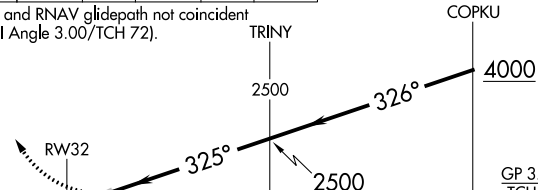
RNAV (RNP) Z RWY 32
PITTSBURGH INTL (PIT)

For uncompensated Baro-VNAV systems, procedure NA below -18°C (0°F) or above 54°C (130°F). GPS required.		MALS	MISSED APPROACH: Climb to 4000 on track 325° to JAVET and track 355° to ASIWU and track 035° to EWC VOR/DME and hold.	
D-ATIS ARR 127.25 DEP 135.9	PITTSBURGH APP CON 123.95 360.8	PITTSBURGH TOWER 128.3 291.7	GND CON SOUTH 121.9 348.6 NORTH 127.8 348.6	CLNC DEL 126.75 353.7



ELEV 1203	D	TDZE 1124
-----------	---	-----------



4000 ↑ tr 325°	JAVET ✧ tr 355°	ASIWU ✧ tr 035°	EWC ◻		
VGSI and RNAV glidepath not coincident (VGSI Angle 3.00/TCH 72).					
					
CATEGORY	A	B	C	D	
RNP 0.30 DA	1503/40 379 (300-¾)				
AUTHORIZATION REQUIRED					

NE-4, 31 DEC 2020 to 28 JAN 2021

NE-4, 31 DEC 2020 to 28 JAN 2021