

WAAS CH <b>70326</b> <b>W32A</b>	APP CRS <b>325°</b>	Rwy Idg <b>7466</b> TDZE <b>1124</b> Apt Elev <b>1203</b>
--	------------------------	---

RNAV (GPS) Y RWY 32  
PITTSBURGH INTL (PIT)

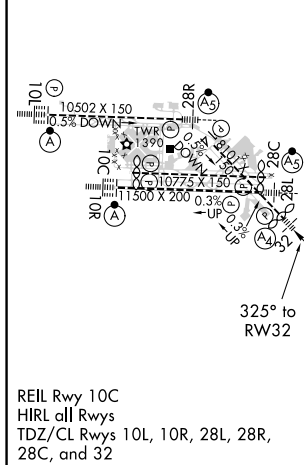
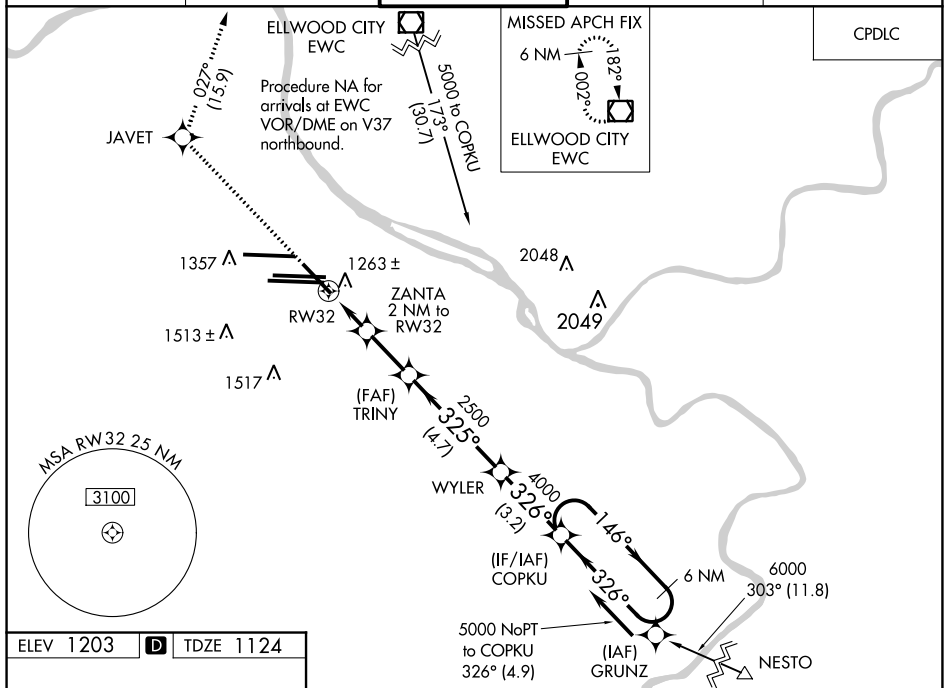
**▼** For uncompensated Baro-VNAV systems, LNAV/VNAV NA below -18°C (0°F) or above 54°C (130°F). DME/DME RNP-0.3 NA. Inop table does not apply to LPV. For inop ALS, increase LNAV/VNAV all Cats visibility to RVR 4500.

MALS



**MISSED APPROACH:** Climb to 4000 direct JAVET and on track 027° to EWC VOR/DME and hold.

D-ATIS			GND CON	
ARR <b>127.25</b>	PITTSBURGH APP CON	PITTSBURGH TOWER	SOUTH <b>121.9 348.6</b>	CLNC DEL
DEP <b>135.9</b>	<b>123.95 360.8</b>	<b>128.3 291.7</b>	NORTH <b>127.8 348.6</b>	<b>126.75 353.7</b>



4000 ↑	JAVET ✦	tr 027° ✧	EWG ☐	VGSi and RNAV glidepath not coincident (VGSi Angle 3.00/TCH 72).				6 NM Holding Pattern
* LNAV only.				ZANTA 2 NM to RW32	TRIN Y 2500	WYLER	COPKU	
CATEGORY		A		B		C		D
LPV DA		1324/40 200 (200-¾)						
LNAV/ VNAV DA		1438/40 314 (300-1¾)						
LNAV MDA		1520/40 396 (400-¾)				1520/45 396 (400-1⅞)		
<b>C</b> CIRCLING		1700-1 497 (500-1)				1880-2 677 (700-2)		1880-2 ¼ 677 (700-2 ¼)

RNAV (GPS) Y RWY 32