

# RNAV (GPS) RWY 3

## NORTH CENTRAL WEST VIRGINIA (CKB)

Rwy 3 helicopter visibility reduction below  $\frac{3}{4}$  SM NA.

**MISSED APPROACH:** Climb to 3800 direct FONTZ and hold.

MSA RW03 25 NM

4700

MISSED APCH FIX

4 NM

031°

211°

FONTZ

Λ 1979

Λ 1736

1717

1774

MORGANTOWN MGW

4000 to JITUK

227°

(35.2)

Procedure NA for arrivals on MGW VOR/DME airway radials 201 CW 307.

Λ 1922

2044

1474

1519±

1749±

1579±

1521

1626

1963±

RW03

1397

2016

2062

ZODPA

2.3 NM to RW03

(FAF) NULNE

3200

031°

(3.6)

OPEXE

3400

031° (3.3)

(IF/IAF) JITUK

3900 NoPT

098°

(9.6)

(IAF) BENZO

Procedure NA for arrivals at BENZO on V35 southwest bound.

Procedure NA for arrivals on EKN VORTAC airway radials 254 CW 346.

2427

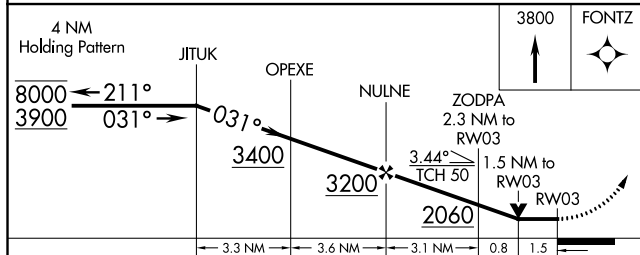
### Procedure NA for arrivals at BENZO on V35 southwest bound


Procedure NA for arrivals  
on MGW VOR/DME airway  
radials 201 CW 307.

(IAF) BENZO  $\triangle$  — 3900 NoPT — 098° —  
(9.6)

Procedure NA for arrivals  
on EKN VORTAC airway  
radials 254 CW 346.

ELEV	1224	<b>D</b>	TDZE	1188
------	------	----------	------	------



CATEGORY	A	B	C	D
LP MDA	1780-1	592 (600-1)	1780-1 <sup>3</sup> / <sub>4</sub>	592 (600-1 <sup>3</sup> / <sub>4</sub> )
LNAV MDA	1840-1	652 (700-1)	1840-1 <sup>7</sup> / <sub>8</sub>	652 (700-1 <sup>7</sup> / <sub>8</sub> )
 CIRCLING	1940-1 716 (800-1)	2040-1 <sup>1</sup> / <sub>4</sub> 816 (900-1 <sup>1</sup> / <sub>4</sub> )	2320-3	1096 (1100-3)

