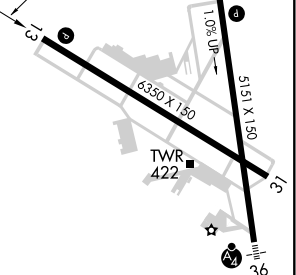
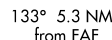


ILS or LOC RWY 13
READING RGNI/CARL A SPAATZ FIELD (RDG)

MISSED APPROACH: Climb to 900 then climbing right turn to 3200 on heading 280° and LRP VOR/DME R-020 to OUTLT INT/I-VXO 12.7 DME and hold.

| | |
|--------------|---------------|
| GND CON | UNICOM |
| 121.9 | 122.95 |



| | | | | | |
|-----------------------------------|------|------|------|------|------|
| REIL Rwy 13 and 31 L | | | | | |
| HIRL Rwy 13-31 and 18-36 L | | | | | |
| FAF to MAP 5.3 NM | | | | | |
| Knots | 60 | 90 | 120 | 150 | 180 |
| Min:Sec | 5:18 | 3:32 | 2:39 | 2:07 | 1:46 |

NE-4, 31 DEC 2020 to 28 JAN 2021