

LOC I-RDG <u>109.5</u>	APP CRS 004°	Rwy Idg 5151 TDZE 343 Apt Elev 344
----------------------------------	------------------------	---

ILS or LOC RWY 36
READING RGNL/CARL A SPAATZ FIELD (RDG)

▼ **▲** Night Landing: RWy 18, 31 NA. Inoperative table does not apply. When local altimeter setting not received, use Harrisburg Intl altimeter setting and increase S-LS 36 DA to 686 feet and all Cats visibility ¼ mile, and increase all MDA 100 feet, and S-LOC 36 Cats C and D visibility ¼ mile, and Circling Cat B and C visibility ¼ mile and Cat D visibility ½ mile.

MALSF

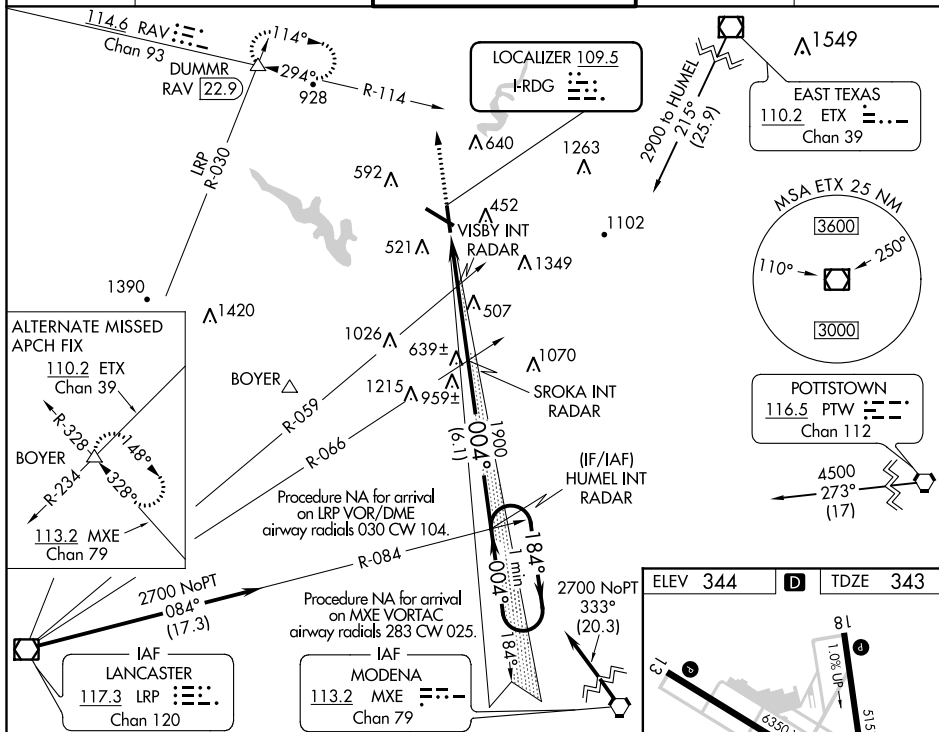
MISSED APPROACH: Climb to 3000 on heading 004° and RAV VORTAC R-114 to DUMMR INT/RAV 22.9 DME and hold, continue climb-in-hold to 3000.

ATIS
127.1

READING APP CON★
125.15 257.9

READING TOWER ★
119.9 (CTAF) **L** 288.3

GND CON
121.9

UNICOM
122.95

NE-4, 31 DEC 2020 to 28 JAN 2021

READING, PENNSYLVANIA

AMDT 30C 15SEP16

READING RGNL/CARL A SPAATZ FIELD (RDG)

40°23'N-75°58'W

ILS or LOC RWY 36