

LOC I-PKB	APP CRS	Rwy Idg	6780
110.7	027°	TDZE	830
		Apt Elev	859

ILS or LOC RWY 3

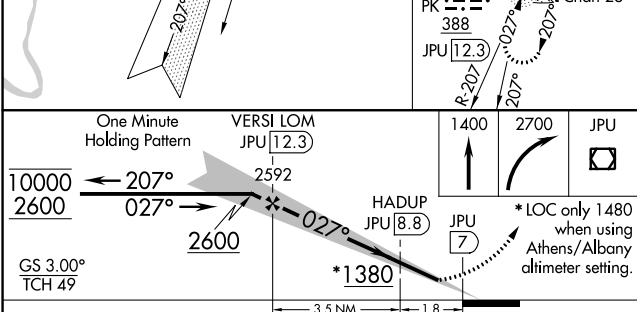
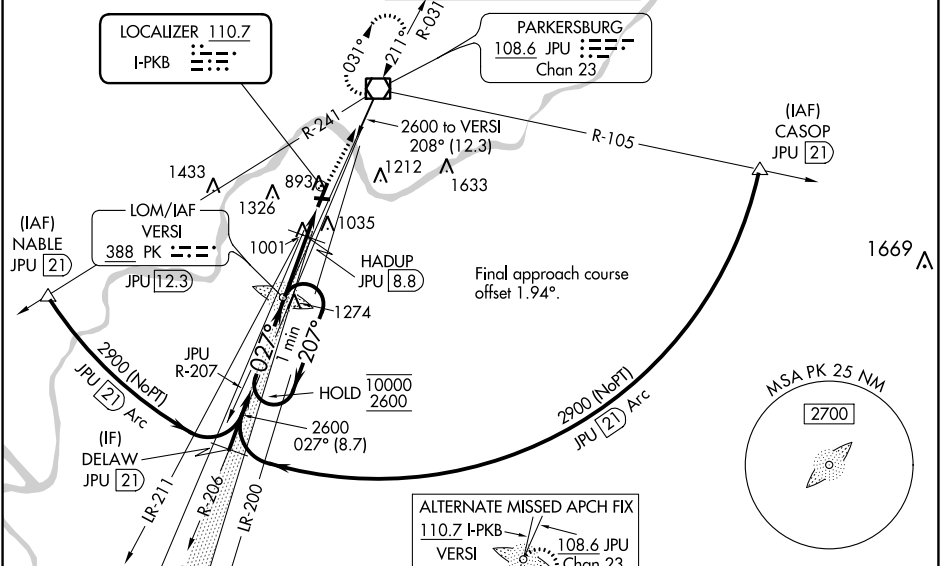
MID-OHIO VALLEY RGNL (PKB)

NA Circling Rwy 10, 28 NA at night. Rwy 3 helicopter visibility reduction below RVR 4000 NA. When local altimeter setting not received, use Athens/Albany altimeter setting and increase all DA/MDA 100 feet; increase S-ILS 3 all Cats visibility to RVR 5000, S-LOC 3 Cats C/D to 1½ SM, S-LOC 3 HADUP fix minimums (DME required) Cats C/D to RVR 5500, and Circling Cat C ½ SM. For inop ALS, increase S-LOC 3 Cat A/B and S-LOC 3 HADUP fix minimums (DME required) Cat A/B visibility to RVR 5500. For inop ALS when using Athens/Albany altimeter setting, increase S-ILS 3 all Cats visibility to 1½ SM and S-LOC 3 all Cats and S-LOC 3 HADUP fix minimums (DME required) Cat A/B visibility to RVR 5500.

MALSR

MISSED APPROACH:
Climb to 1400 then climbing right turn to 2700 direct JPU VOR/DME and hold.

ATIS 124.35	INDIANAPOLIS CENTER 125.55 398.9	PARKERSBURG TOWER ★ 123.7 (CTAF) 257.8	GND CON 121.7	UNICOM 122.95
----------------	-------------------------------------	---	------------------	------------------



CATEGORY	A	B	C	D
S-ILS 3	1201/40 371 (400-¾)			
S-LOC 3	1380/40	550 (600-¾)	1380/60	550 (600-1¼)
CIRCLING	1380-1	521 (600-1)	1380-1½ 521 (600-1½)	1420-2 561 (600-2)
HADUP FIX MINIMUMS (DME REQUIRED)				
S-LOC 3	1260/40 430 (500-¾)			
CIRCLING	1320-1 461 (500-1)	1340-1 481 (500-1)	1360-1½ 501 (600-1½)	1420-2 561 (600-2)

ELEV 859 **D** TDZE 830

HIRL Rwy 3-21 and 10-28

REIL Rwy 10, 21

REIL Rwy 28

LOC 110.7 I-PKB

TWR 918

027° 5.3 NM from FAF

FAF to MAP 5.3 NM

Knots	60	90	120	150	180
Min:Sec	5:18	3:32	2:39	2:07	1:46