

RNAV (GPS) RWY 3  
MID-OHIO VALLEY RGNL (PKB)

**▼** Circling Rwy 10, 28 NA at night. Rwy 3 helicopter visibility reduction below RVR 4000 NA.  
**▲** For uncompensated Baro-VNAV systems, LNAV/VNAV NA below -17°C or above 38°C.  
 When local altimeter setting not received, use Athens/Albany altimeter setting and increase all DA/MDA 100 feet and LPV all Cats visibility to RVR 5500, LNAV/VNAV all Cats visibility to 1% SM, LNAV Cats C/D visibility to RVR 5500 and Circling Cat C visibility to 1% SM.  
 For inop ALS, increase LNAV/VNAV all Cats visibility to 1% SM and LNAV Cats A/B visibility to RVR 5500. For inop ALS, when using Athens/Albany altimeter setting, increase LPV all Cats visibility to 1% SM and LNAV/VNAV all Cats visibility to 1% SM.

MALSR

**MISSED APPROACH:**  
Climb to 3000 direct  
OWAVE and hold.


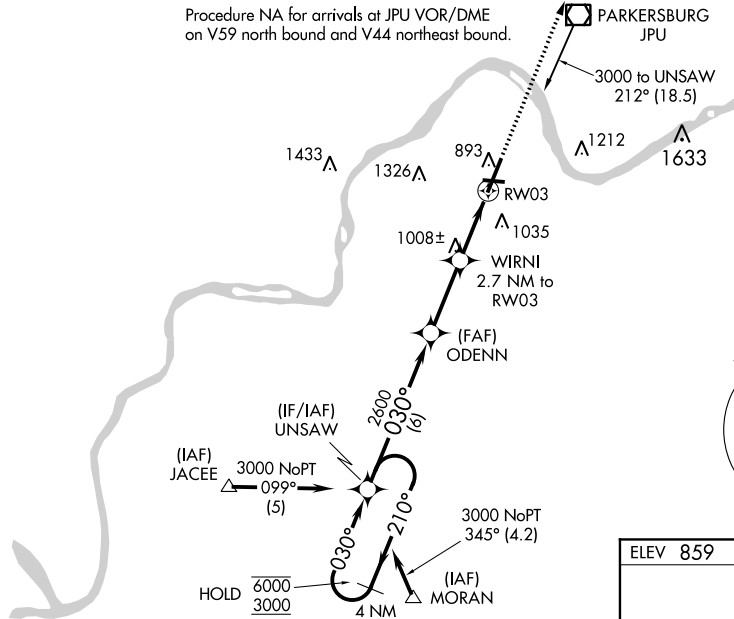
PARKERSBURG TOWER ★  
123.7 (CTAF) **L** 257.8

UNICOM  
122.95

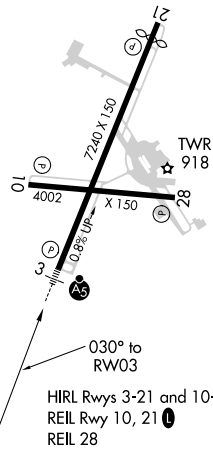
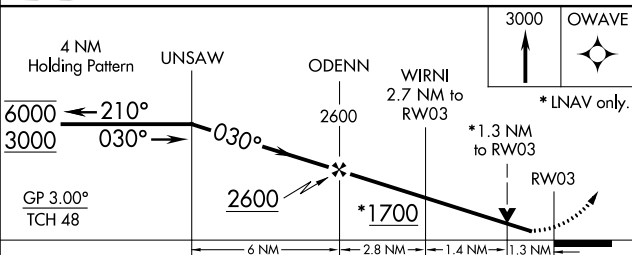
Procedure NA for arrivals at JPU VOR/DME  
on V59 north bound and V44 northeast bound.

PARKERSBURG  
JPU  
~3000 to UNSAW  
212° (18.5)

MISSED APCH FIX

A circular component with the text "MSA RW03 25 NM" curved along the top edge, a rectangular box containing the number "2800" in the center, and a small circular symbol with a crosshair below the box.

ELEV 859	<b>D</b>	TDZE 830
----------	----------	----------



CATEGORY		A	B	C	D
LPV	DA	1202/40		372 (400-¾)	
LNAV/ VNAV	DA	1336/60		505 (500-1¼)	
LNAV	MDA	1260/40		430 (500-¾)	
CIRCLING		1320-1 461 (500-1)	1340-1 481 (500-1)	1360-1½ 501 (600-1½)	1420-2 561 (600-2)

NE-4, 31 DEC 2020 to 28 JAN 2021