

LOC I-HLG <b>109.7</b>	APP CRS <b>033°</b>	Rwy Idg TDZE Apt Elev	<b>5002</b> <b>1172</b> <b>1194</b>
---------------------------	------------------------	-----------------------------	---

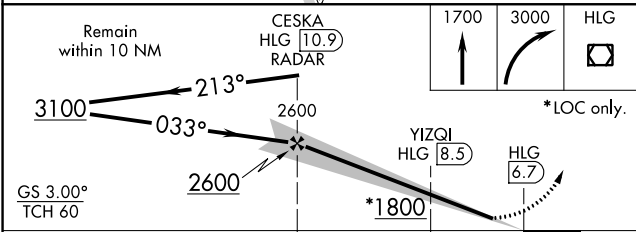
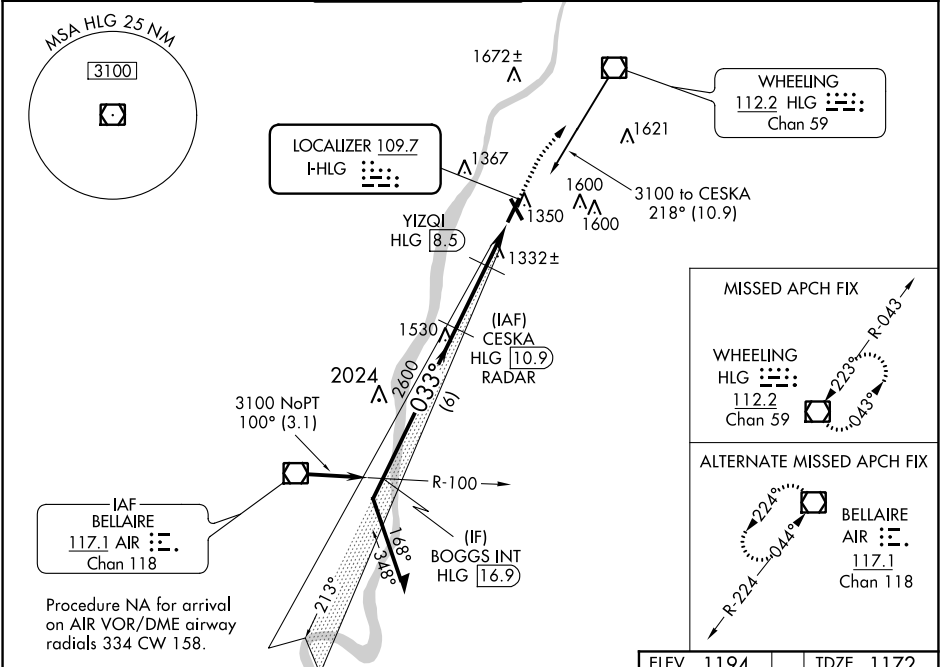
ILS or LOC RWY 3  
WHEELING OHIO COUNTY (HLG)

**⚠** Inoperative table does not apply to S-ILS all Cats and S-LOC Cats A/B.  
**⚠** Autopilot coupled approach NA below 1401. DME or RADAR required.

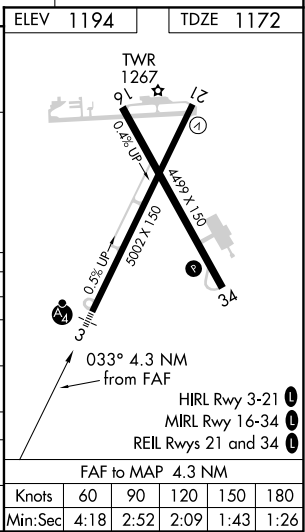
**MALSF**

**MISSED APPROACH:** Climb to 1700 then climbing right turn to 3000 direct HLG VOR/DME and hold.

ASOS <b>127.375</b>	PITTSBURGH APP CON <b>125.275 285.575</b>	WHEELING TOWER ★ <b>118.1</b> (CTAF) <b>0257.8</b>	GND CON <b>121.75</b>	CLNC DEL <b>125.275</b> (when twr closed)	UNICOM <b>122.95</b>
------------------------	--	---	--------------------------	---	-------------------------



CATEGORY	A	B	C	D
S-ILS 3		1372-1	200 (200-1)	
S-LOC 3	1800-1	628 (700-1)	1800-1½	628 (700-1½)
CIRCLING	1800-1	606 (700-1)	1900-2 706 (800-2)	1920-2¼ 726 (800-2¼)
YIZQI FIX MINIMUMS				
S-LOC 3		1600-1	428 (500-1)	
CIRCLING	1720-1 526 (600-1)	1740-1 546 (600-1)	1900-2 706 (800-2)	1920-2¼ 726 (800-2¼)



NE-4, 31 DEC 2020 to 28 JAN 2021

NE-4, 31 DEC 2020 to 28 JAN 2021