

WAAS CH 62813 W04A	APP CRS 044°	Rwy Idg TDZE 962 Apt Elev 962
--	------------------------	---

RNAV (GPS) RWY 4

WILKES-BARRE/SCRANTON INTL (AVP)

⚠

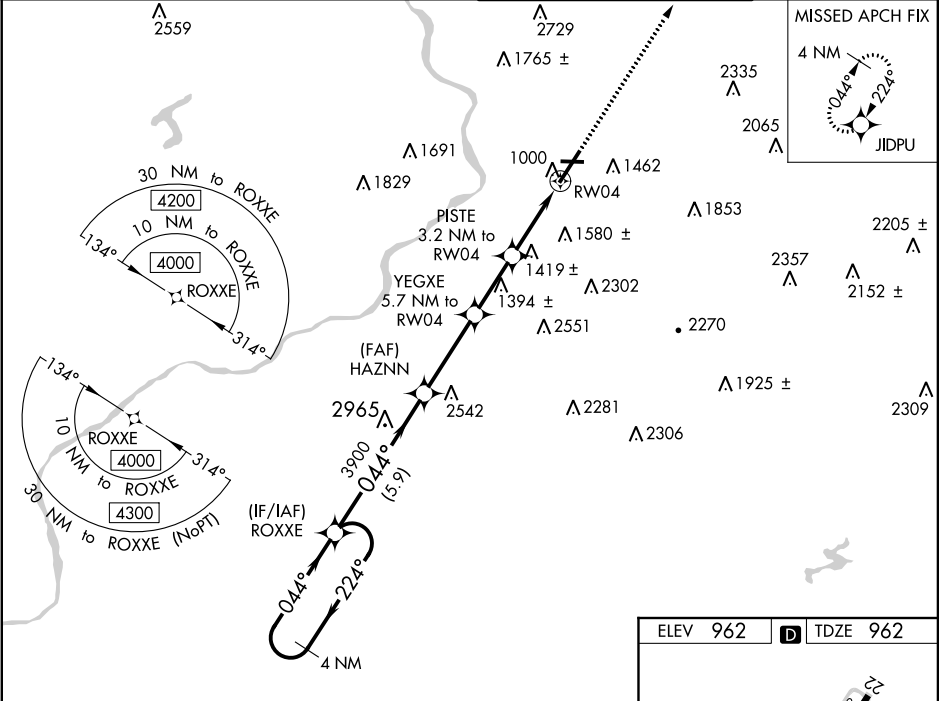
⚠

Circling to Rwy 10 and 28 NA at night. For uncompensated Baro-VNAV systems, LNAV/VNAV NA below -17°C (2°F) or above 54°C (130°F). When local altimeter setting not received, procedure NA. For inop MALSR, increase LNAV Cats C/D visibility to 2 miles. Circling NA for Cats C and D southeast of Rwy 4-22. DME/DME RNP-0.3 NA. **RVR 1800 authorized with use of FD or AP or HUD to DA.

MALSR

MISSED APPROACH: Climb to 4000 direct JIDPU and hold.

ATIS 111.6	WILKES-BARRE APP CON 120.95 256.7 (280°-100°) 126.3 256.7 (101°-279°)	WILKES-BARRE TOWER 120.1 257.8	GND CON 121.9
----------------------	---	--	-------------------------



<div>4 NM Holding Pattern</div> <div>ROXXE</div>				<div>HAZNN</div> <div>3900</div>				<div>YEGXE</div> <div>5.7 NM to RW04</div>				<div>PISTE</div> <div>3.2 NM to RW04</div>				<div>4000</div> <div>JIDPU</div>	
<div>4000</div> <div>← 224°</div> <div>→ 044°</div>				<div>→ 044°</div>				<div>→ 044°</div>				<div>*LNAV only.</div>					
<div>GP 3.00°</div> <div>TCH 53</div>				<div>3900</div>				<div>*2820</div>				<div>*2020</div>					
<div>← 5.9 NM</div>				<div>← 3.4 NM</div>				<div>← 2.5 NM</div>				<div>← 1.1 NM</div>					
<div>← 2.1 NM</div>				<div>← 2.1 NM</div>				<div>← 2.1 NM</div>				<div>← 2.1 NM</div>					
CATEGORY		A		B		C		D									
LPV DA **		1162/24 200 (200-½)															
LNAV/ VNAV DA		1618-1¼ 656 (700-1¼)															
LNAV MDA		1680/24 718 (800-½)				1680-1⅝ 718 (800-1⅝)											
CIRCLING		1840-1¼				1980-1½				1980-3							
		878 (900-1¼)				1018 (1100-½)				1018 (1100-3)							
										2280-3							
										1318 (1400-3)							

