

APP CRS
064°

Rwy Idg
TDZE
2850

Apt Elev
2857

RNAV (GPS) RWY 5

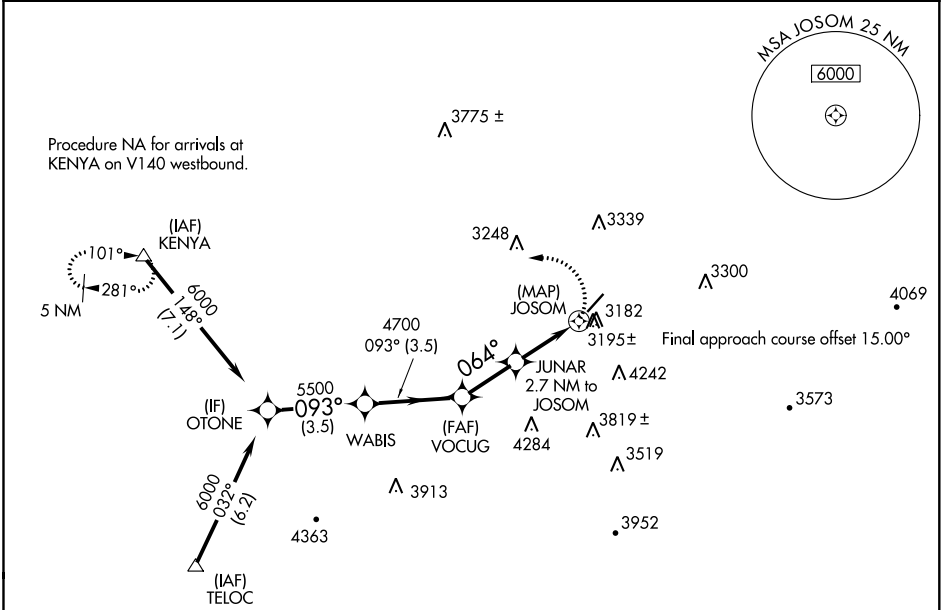
MERCER COUNTY (BLF^F)


RNP APCH.

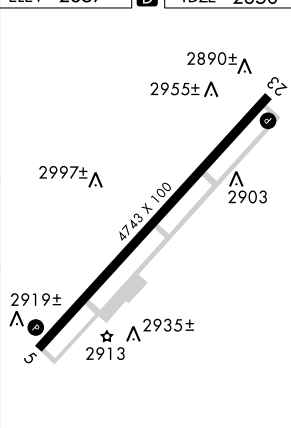
Procedure NA at night.
Rwy 5 helicopter visibility reduction below 1 SM NA.

MISSED APPROACH: Climbing left turn to 6000 direct KENYA and hold.

ASOS 132.725	INDIANAPOLIS CENTER 126.575 257.85	CTAF 122.9 
------------------------	--	--



ELEV 2857  TDZE 2850



OTONE

WABIS

VOCUG

JUNAR 2.7 NM to JOSOM

JOSOM

6000

5500

4700

3940

093°

064°

3.5 NM

3.5 NM

2.3 NM

2.7 NM

0.5

CATEGORY	A	B	C	D
LNAV MDA	3560-1	710 (800-1)	3560-2	3560-2 1/4
			710 (800-2)	710 (800-2 1/4)


BLUEFIELD, WEST VIRGINIA

Orig-B 10SEP20

37°18'N - 81°12'W

MERCER COUNTY (BLF^F)

RNAV (GPS) RWY 5

HIRL Rwy 5-23 

REIL Rwy 5 and 23 