

| | | | |
|-------------|---------|----------|------|
| VOR/DME BLF | APP CRS | Rwy Idg | 4743 |
| 110.0 | 225° | TDZE | 2857 |
| Chan 37 | | Apt Elev | 2857 |

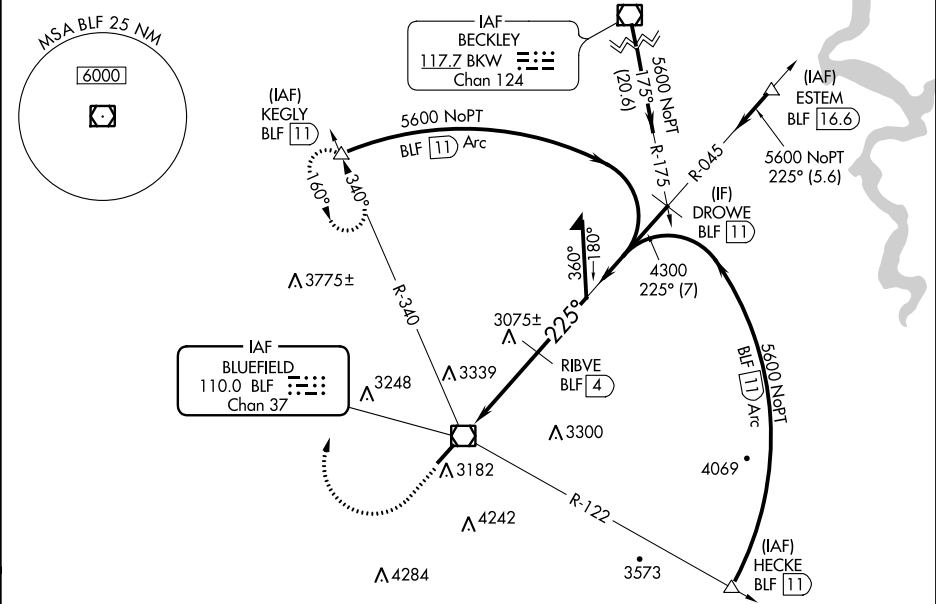
VOR RWY 23

MERCER COUNTY (BLF¹)

⚠ DME required. When local altimeter setting not received, use Beckley altimeter setting and increase all MDA 460 feet; increase S-23 visibility Cat A ¼ mile, Cat B ½ mile, Cat C 1 ½ mile, Cat D 1 ¼ mile; increase Circling visibility Cat A ¼ mile, Cat B ½ mile, Cat C 1 mile, Cat D ¾ mile. VDP NA when using Beckley altimeter setting. Circling NA southeast of Rwy 5-23.

MISSED APPROACH: Climb to 3800 then climbing right turn to 6000 on heading 020° and BLF R-340 to KEGLY/BLF 11 DME and hold.

| | | |
|---------|---------------------|----------------|
| ASOS | INDIANAPOLIS CENTER | CTAF |
| 132.725 | 126.575 257.85 | 122.9 0 |



ELEV 2857 **D** TDZE 2857

3800

6000

↑

hdg 020°

BLF R-340

KEGLY

BLF VOR/DME

5600

Remain within 10 NM

045°

5100

225°

4300

2.91°

TCH 55

BLF 1.2

RIBVE BLF 4

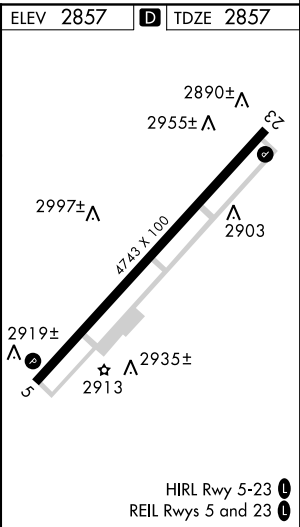
0.5

1.2

2.8 NM

VGSI and descent angles not coincident (VGSI Angle 3.00/ TCH 65).

| CATEGORY | A | B | C | D |
|----------|--------|-------------|-------------------------|-------------------------|
| S-23 | 3440-1 | 583 (600-1) | 3440-1½ 583 (600-1½) | 3440-1¾ 583 (600-1¾) |
| CIRCLING | 3440-1 | 583 (600-1) | 3560-2 703 (800-2) | 3560-2¼ 703 (800-2¼) |



NE-4, 31 DEC 2020 to 28 JAN 2021

NE-4, 31 DEC 2020 to 28 JAN 2021