

LOC I-JST

110.1

APP CRS

334°

Rwy Idg

7003

TDZE

2281

Apt Elev

2284

ILS or LOC RWY 33

JOHN MURTHA JOHNSTOWN-CAMBRIA COUNTY (JST)

DME required.

▽

Glide slope unusable beyond 5 degrees left of course.

▲

For inop ALS, increase S-LOC 33 Cat C/D visibility to ¾ SM.

MALSR

MISSED APPROACH:

Climb to 3700 then climbing right turn to 4600 direct JST VOR/DME and hold, continue climb-in-hold to 4600.

ATIS

118.325

JOHNSTOWN APP CON

121.2

299.2

JOHNSTOWN TOWER

125.75 (CTAF)

0

GND CON

121.6

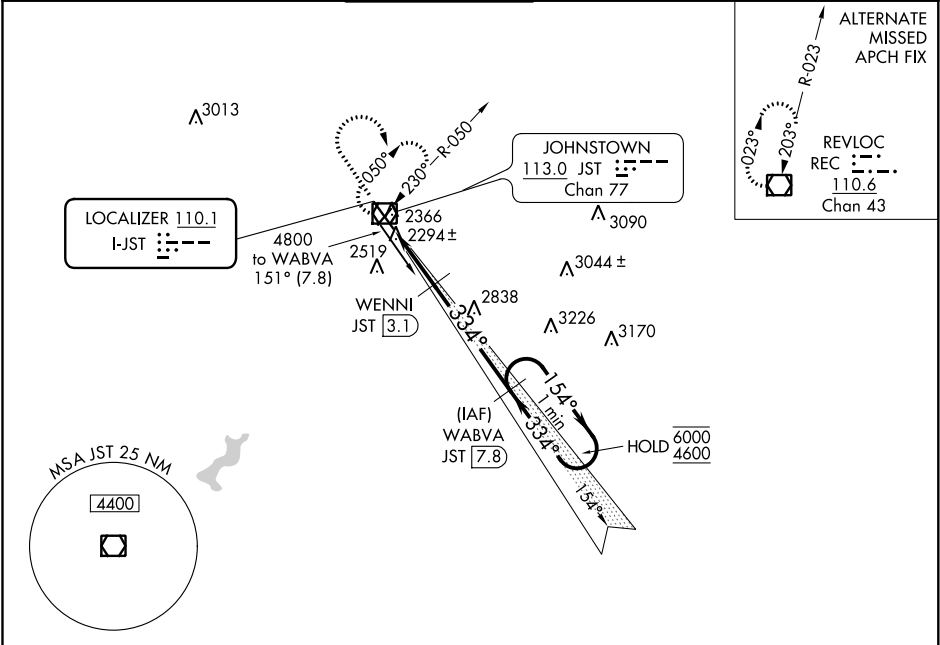
CLNC DEL

126.85

235.775

UNICOM

122.95



ELEV 2284

D

TDZE 2281

Diagram illustrating the runway layout and associated altitudes:

- Runway 33: 4887 x 100
- Runway 5: 4887 x 100
- Runway 23: 4887 x 100
- Runway 15-33: 4887 x 100
- Runway 5-23: 4887 x 100
- Altitudes: 2360, 2366, 2294 ±, 2519, 2838, 3090, 3044 ±, 3026, 3170, 3328, 2366, 2294 ±, 2519, 2838, 6000, 4600
- Distances: 4800 to WABVA (151° (7.8)), 4.7 NM, 1.6 NM, 0.9 NM

3700

4600

JST

VGSI and ILS glidepath not coincident (VGSI Angle 3.00/TCH 53).

One Minute Holding Pattern

\*LOC only.

Diagram illustrating the holding pattern for the missed approach:

- Altitudes: 3700, 4600, 3140, 3100, 3090, 3044 ±, 3026, 3170, 3328, 2366, 2294 ±, 2519, 2838, 6000, 4600
- Distances: 4800 to WABVA (151° (7.8)), 4.7 NM, 1.6 NM, 0.9 NM

CATEGORY	A	B	C	D
S-ILS 33	2481-½	200 (200-½)		
S-LOC 33	2600-½	319 (400-½)		
CIRCLING	2700-1 416 (500-1)	2880-1 596 (600-1)	2880-1½ 596 (600-1½)	3000-2¼ 716 (800-2¼)

JOHNSTOWN, PENNSYLVANIA

Amdt 7B 15AUG19

JOHN MURTHA JOHNSTOWN-CAMBRIA COUNTY (JST)

40°19'N-78°50'W

ILS or LOC RWY 33