
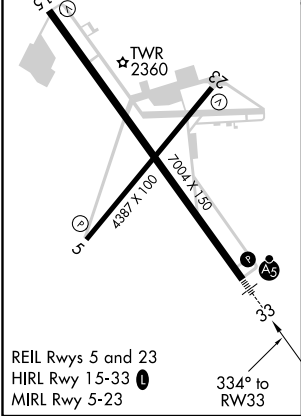
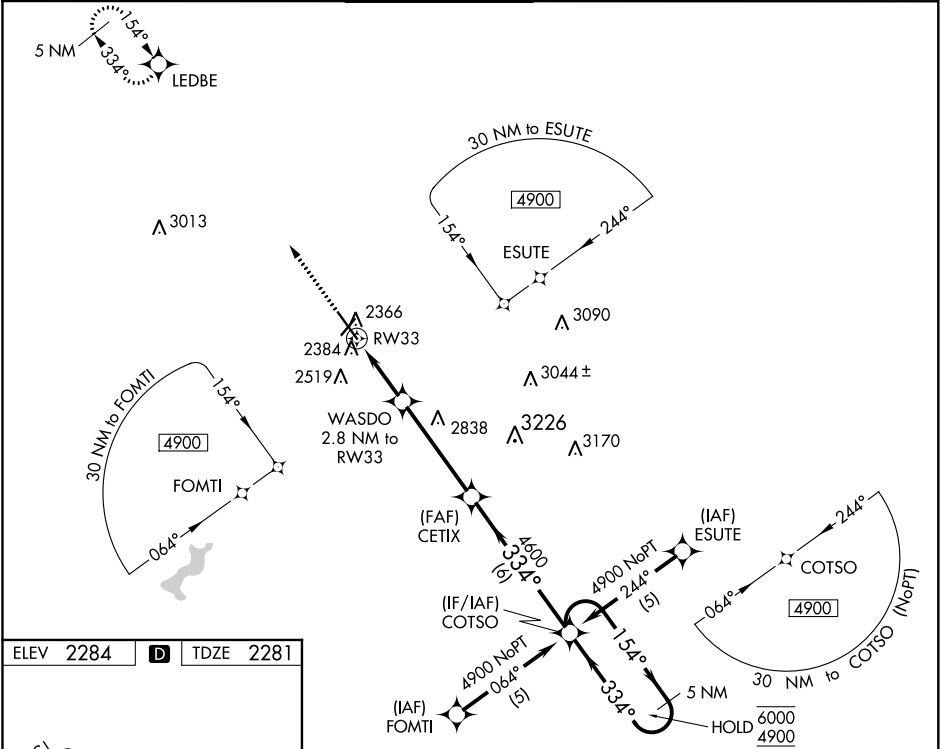


WAAS CH 61113 W33A	APP CRS 334°	Rwy Idg TDZE 2281 Apt Elev 2284	7003 2281 2284
--	------------------------	---	---

RNAV (GPS) RWY 33

JOHN MURTHA JOHNSTOWN-CAMBRIA COUNTY (JST)

RNP APCH.					MALSR		MISSED APPROACH: Climb to 4800 direct LEDBE and hold.				
Inop table does not apply to LNAV Cat D. For uncompensated Baro-VNAV systems, LNAV/VNAV NA below -19°C or above 54°C. For inop ALS increase LNAV/VNAV all Cats visibility to ½ SM and LNAV Cat C visibility to 1 SM.											
ATIS 118.325		JOHNSTOWN APP CON ★ 121.2 299.2		JOHNSTOWN TOWER ★ 125.75 (CTAF) 0		GND CON 121.6		CLNC DEL 126,85 235,775		UNICOM 122,95	



4800 LEDBE		VGSI and RNAV glidepath not coincident (VGSI Angle 3.00/TCH 53).		5 NM Holding Pattern	
*LNAV only		WASDO 2.8 NM to RW33		COTSO 154° → 6000 4900	
RW33		CETIX 4600		GP 3.00° TCH 58	
1 NM		1.8 NM		4.2 NM	
6 NM					
CATEGORY	A	B	C	D	
LPV DA	2481-1½		200 (200-½)		
LNAV/VNAV DA	2552-½		271 (300-½)		2552-¾ 271 (300-¾)
LNAV MDA	2640-½		359 (400-½)		2640-1 359 (400-1)
CIRCLING	2700-1 416 (500-1)		2880-1 596 (600-1)		2880-1½ 596 (600-½) 3000-2¼ 716 (800-2¼)