

VOR/DME JST
113.0
Chan **77**

APP CRS
230°

Rwy Idg
TDZE
Apt Elev
4386
2284
2284

VOR Y RWY 23

JOHN MURTHA JOHNSTOWN-CAMBRIA COUNTY (JST)

V

A

Rwy 23 helicopter visibility reduction below ¾ SM NA.

MISSED APPROACH: Climb to 4200 then left turn direct JST VOR/DME and hold.

ATIS
118.325

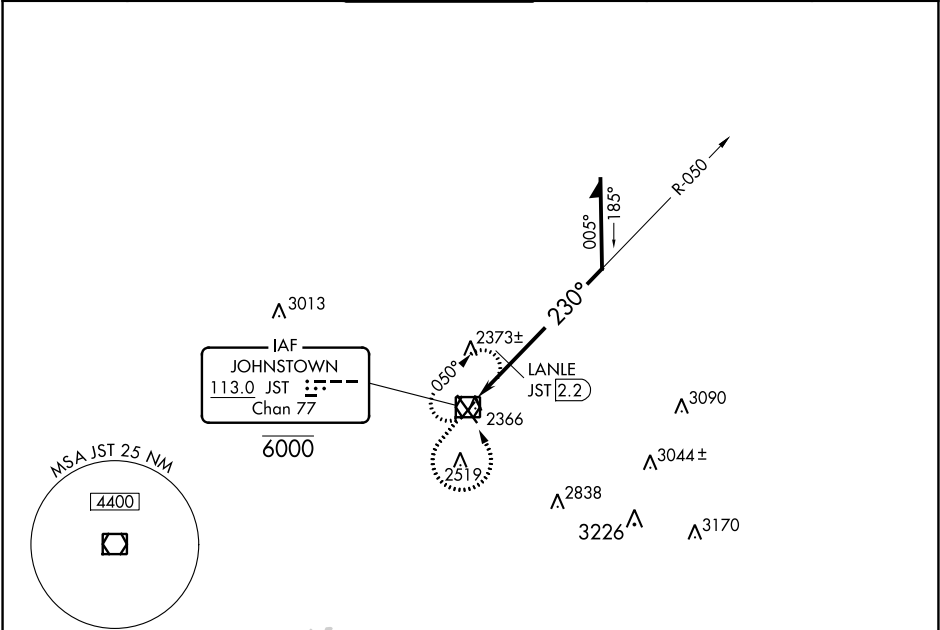
JOHNSTOWN APP CON ★
121.2 299.2

JOHNSTOWN TOWER ★
125.75 (CTAF) 0

GND CON
121.6

CLNC DEL
126.85 235.775

UNICOM
122.95



ELEV **2284** **D** TDZE **2284**

51

2360

230° to JST VOR/DME

488 X 100

702 X 150

53

REIL Rws 5 and 23
HIRL Rwy 15-33 **0**
MIRL Rwy 5-23

4200

JST

JST VOR/DME

6000

050°

3800

2920

2.98°

TCH 45

1.1

0.8 NM

Remain within 10 NM

CATEGORY	A	B	C	D
S-23	2920-1	636 (700-1)	2920-1¾ 636 (700-1¾)	2920-2 636 (700-2)
CIRCLING	2920-1	636 (700-1)	2920-1¾ 636 (700-1¾)	3000-2¼ 716 (800-2¼)
LANLE FIX MINIMUMS				
S-23	2660-1 376 (400-1)			2660-1¼ 376 (400-1¼)
CIRCLING	2700-1 416 (500-1)	2880-1 596 (600-1)	2880-1½ 596 (600-1½)	3000-2¼ 716 (800-2¼)