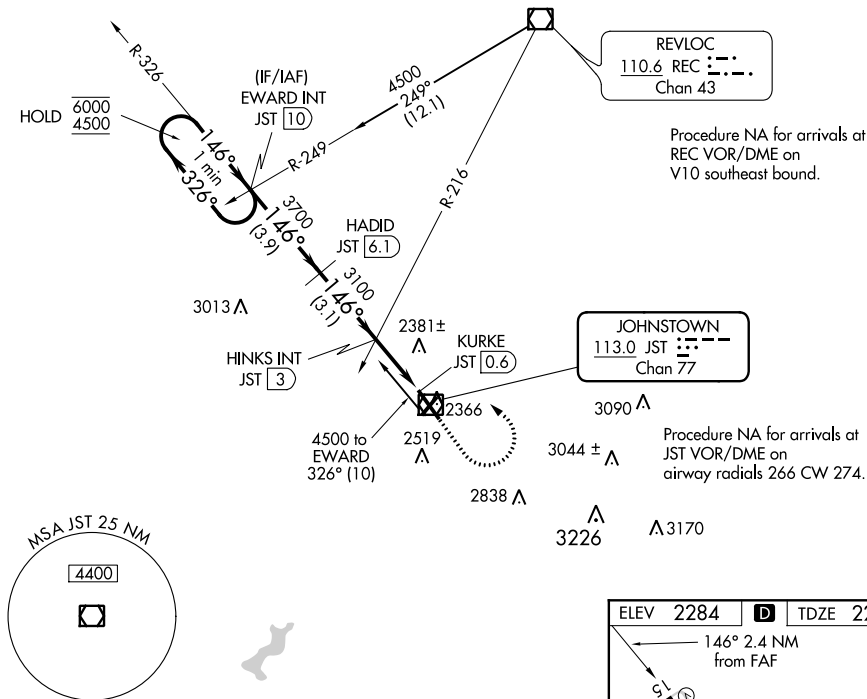
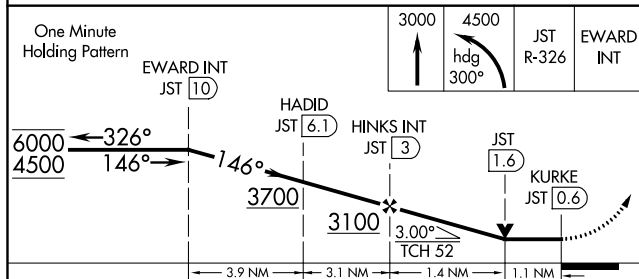


JOHN MURTHA JOHNSTOWN-CAMBRIA COUNTY (JST)

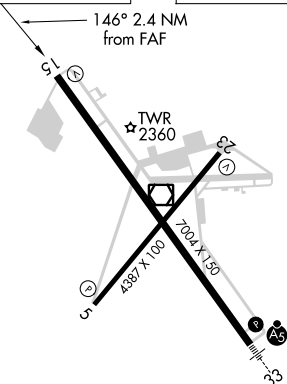
MISSED APPROACH: Climb to 3000 then climbing left turn to 4500 on heading 300° and JST VOR/DME R-326 to EWARD INT/JST 10 DME and hold.

UNICOM
122.95

One Minute Holding Pattern



ELEV 2284	D	TDZE 2276
-----------	----------	-----------



REIL Rwy 5 and 23
HIRL Rwy 15-33 **L**
MIRL Rwy 5-23