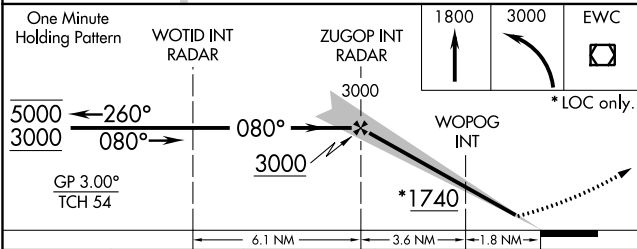
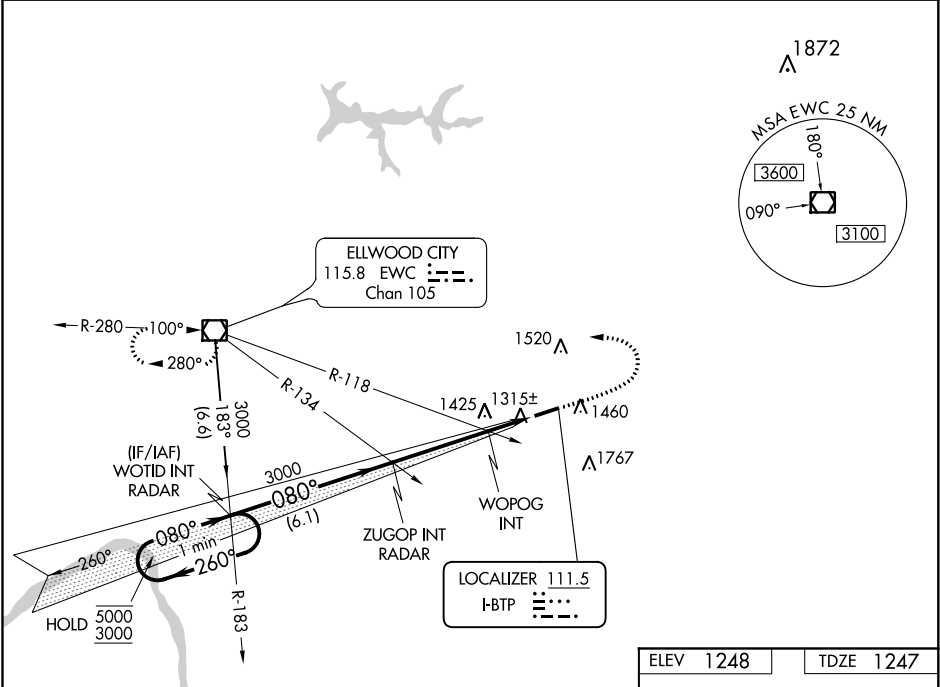


LOC I-BTP 111.5	APP CRS 080°	Rwy Idg TDZE Apt Elev 4801 1247 1248
---------------------------	------------------------	--

ILS or LOC RWY 8

PITTSBURGH/BUTLER RGNL (BTP)

<div><div>▼</div><div>▲</div></div> <div>Rwy 8 helicopter visibility reduction below ¾ SM NA. Circling Rwy 26 NA at night. S-ILS 8 inop table does not apply.</div>	<div>MALSF</div> <div></div>	MISSED APPROACH: Climb to 1800 then climbing left turn to 3000 direct EWC VOR/DME and hold.	
AWOS-3PT 121.450	PITTSBURGH APP CON 124.75 338.2	CLNC DEL 119.4	UNICOM 123.05 (CTAF) 0



CATEGORY	A	B	C	D
S-ILS 8		1497-¾	250 (300-¾)	
S-LOC 8	1740-¾	493 (500-¾)	1740-1½	493 (500-1½)
CIRCLING	1820-1	572 (600-1)	2080-2½ 832 (900-2½)	2080-2¾ 832 (900-2¾)
WOPOG FIX MINIMUMS (DUAL VOR RECEIVERS REQUIRED)				
S-LOC 8		1580-¾	333 (400-¾)	
CIRCLING	1820-1	572 (600-1)	2080-2½ 832 (900-2½)	2080-2¾ 832 (900-2¾)

ELEV	1248	TDZE	1247		
<p>080° 5.4 NM from FAF</p> <p>0.3% UP</p> <p>4801 X 100</p> <p>1293</p> <p>26</p> <p>8</p>					
REIL Rwy 26 HIRL Rwy 8-26					
FAF to MAP 5.4 NM					
Knots	60	90	120	150	180
Min:Sec	5:24	3:36	2:42	2:10	1:48

NE-4, 31 DEC 2020 to 28 JAN 2021

NE-4, 31 DEC 2020 to 28 JAN 2021