

WAAS CH <b>87019</b> <b>W32A</b>	APP CRS <b>325°</b>	Rwy Idg TDZE Apt Elev	<b>6306</b> <b>2120</b> <b>2143</b>
--	------------------------	-----------------------------	---

RNAV (GPS) RWY 32

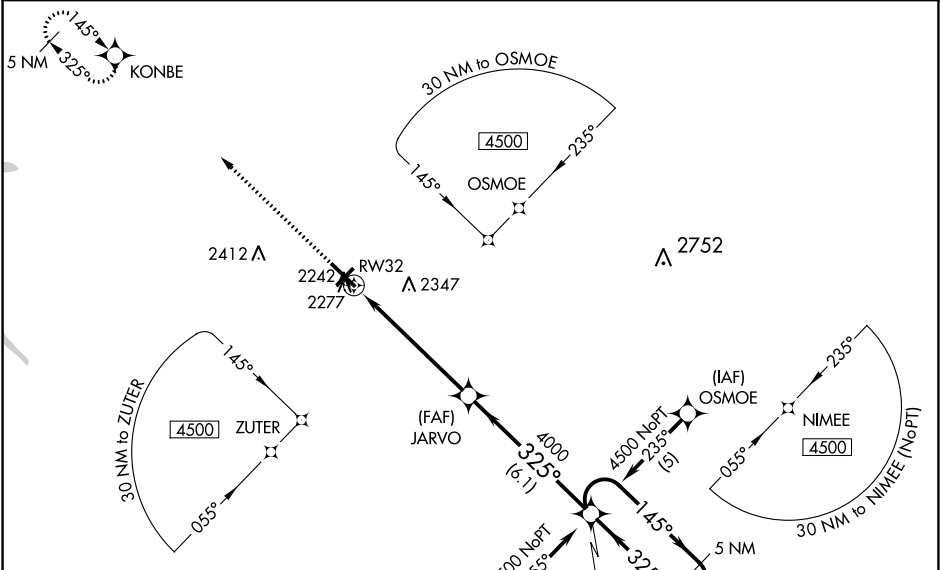
BRADFORD RGNL (BFD)

⚠ For uncompensated Baro-VNAV systems, LNAV/VNAV NA below -19°C (-2°F) or above 54°C (130°F). Baro-VNAV and VDP NA when using St. Marys altimeter setting. DME/DME RNP-0.3 NA. Inop table does not apply to LPV and LNAV Cats A/B. For inop MALSR, increase LNAV/VNAV all Cats visibility to 1½ mile and LNAV Cats C/D visibility to 1¼ mile. When local altimeter setting not received, use St. Marys altimeter setting: Increase LPV DA to 2455 feet and LNAV/VNAV DA to 2685 feet and all MDA 100 feet; increase LNAV/VNAV all Cats visibility ¼ mile. For inop MALSR, when using St. Marys altimeter setting, increase LPV all Cats visibility to 1½ mile.

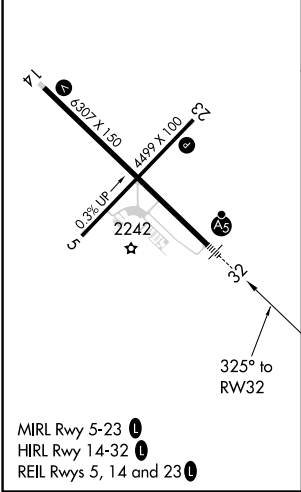
MALSR

MISSED APPROACH:  
Climb to 4500 direct  
KONBE and hold.

ASOS <b>133.825</b>	CLEVELAND CENTER <b>124.325 353.85</b>	UNICOM <b>123.075 (CTAF) 0</b>
------------------------	---	-----------------------------------



ELEV 2143	<b>D</b>	TDZE 2120
-----------	----------	-----------



4500	KONBE	JARVO	NIMEE	5 NM Holding Pattern
*LNAV only.				
*1.2 NM to RWY 32				
1.2 NM	4.5 NM	6.1 NM		
CATEGORY	A	B	C	D
LPV DA		2370-1	250 (300-1)	
LNAV/VNAV DA		2600-1½	480 (500-1½)	
LNAV MDA		2540-1	420 (400-1)	
CIRCLING	2620-1	477 (500-1)	2620-1½ 477 (500-1½)	2700-2 557 (600-2)