

WAAS CH 42723 W13A	APP CRS 128°	Rwy Idg 4102 TDZE 402 Apt Elev 403
--	------------------------	---

RNAV (GPS) RWY 13
LANCASTER (LNS)

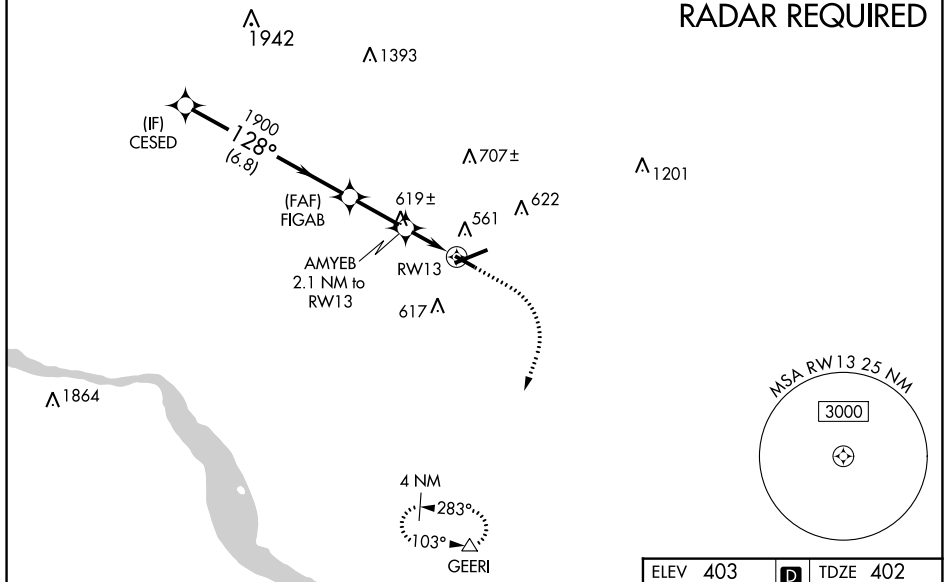
T
A

Night landing: Rwy 13, 31 NA. Baro-VNAV NA when using Harrisburg Intl altimeter setting. For uncompensated Baro-VNAV systems, LNAV/VNAV NA below -1.5°C (5°F) or above 31°C (87°F). DME/DME RNP-0.3 NA. Helicopter visibility reduction below 1 SM NA. When local altimeter setting not received, use Harrisburg Intl altimeter setting and increase all DA 64 feet and all MDA 80 feet, increase LPV and LNAV/VNAV visibility all Cats ½, and LNAV and Circling Cats C and D ¼.

MISSED APPROACH:
Climb to 900 then
climbing right turn
to 3000 direct
GEERJ and hold

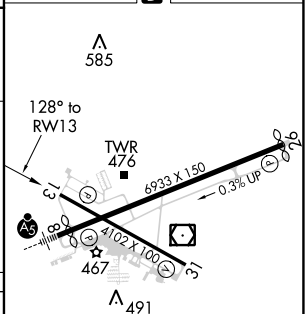
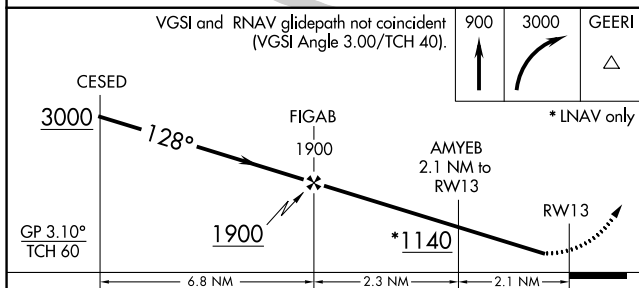
ATIS 125.675	HARRISBURG APP CON 126.45 281.525	LANCASTER TOWER ★ 120.9 (CTAF) 0 251.1	GND CON 121.8	UNICOM 122.95
------------------------	---	--	-------------------------	-------------------------

RADAR REQUIRED



ELEV 403	D	TDZE 402
----------	----------	----------

VGSI and RNAV glidepath not coincident
(VGSI Angle 3.00/TCH 40).



CATEGORY	A	B	C	D
LPV DA	687-1 285 (300-1)			
LNAV/VNAV DA	894-1½ 492 (500-1½)			
LNAV MDA	880-1 478 (500-1)		880-1½ 478 (500-1½)	
CIRCLING	940-1 537 (600-1)		940-1½ 537 (600-1½)	1060-2 657 (700-2)

REIL Rwy 31 **L**
HIRL Rwy 8-26 **L**
MIRL Rwy 13-31 **L**