

|  |                        |   |
|--|------------------------|---|
| WAAS<br>CH <b>78123</b><br><b>W26A</b> | APP CRS<br><b>257°</b> | Rwy Idg<br>TDZE <b>384</b><br>Apt Elev <b>403</b> |
|--|------------------------|---|

RNAV (GPS) RWY 26

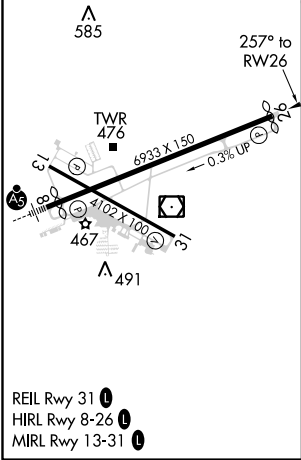
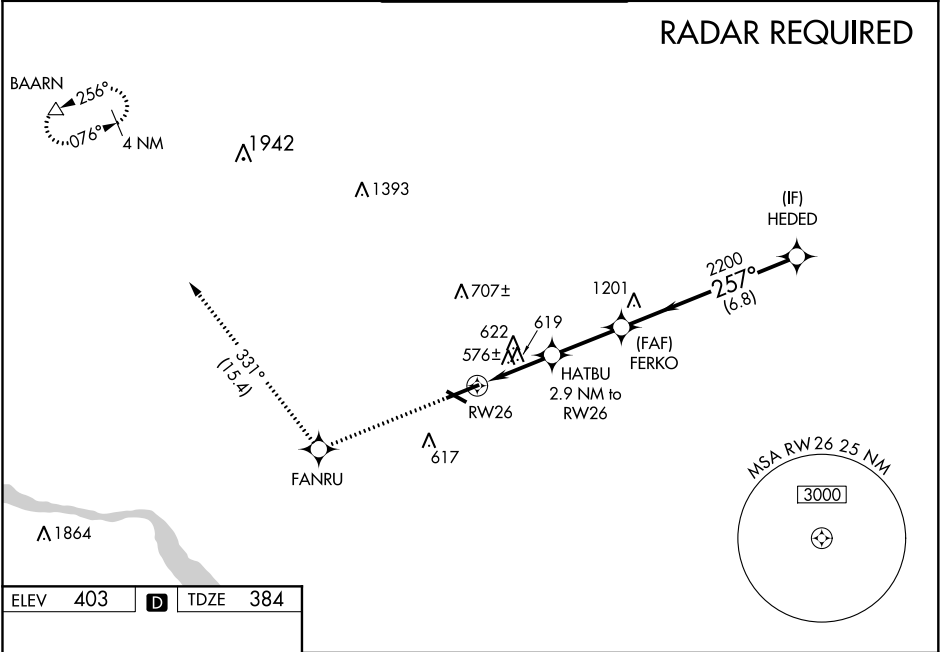
LANCASTER (LNS)

⚠

Night landing: Rwy 13, 31 NA. For uncompensated Baro-VNAV systems, LNAV/VNAV NA below -1.5°C (5°F) or above 41°C (105°F). DME/DME RNP-0.3 NA. Helicopter visibility reduction below 1 SM NA. When local altimeter setting not received, use Harrisburg Intl altimeter setting and increase all DA 64 feet, all MDA 80 feet, increase LPV and LNAV/VNAV visibility all Cats and LNAV and Circling Cat C and D visibility ¼ mile. Baro-VNAV and VDP NA when using Harrisburg Intl altimeter setting.

MISSED APPROACH:  
Climb to 3000 direct FANRU and on track 331° to BAARN and hold.

|                        |   |  |                         |                         |
|------------------------|---|--|-------------------------|-------------------------|
| ATIS<br><b>125.675</b> | HARRISBURG APP CON<br><b>126.45 281.525</b> | LANCASTER TOWER ★<br><b>120.9 (CTAF) 0 251.1</b> | GND CON<br><b>121.8</b> | UNICOM<br><b>122.95</b> |
|------------------------|---|--|-------------------------|-------------------------|



|                 |                                   |  |  |  |
|-----------------|-----------------------------------|--|--|--|
| 3000            | FANRU                             | tr 331°                                  | BAARN                                    | HEDED                                    |
| *LNAV only      | HATBU                             | 2200                                     | 257°                                     | 3000                                     |
| *1.9 NM to RW26 | *2.9 NM to RW26                   | *1340                                    | GP 3.00°                                 | TCH 47                                   |
| 1.9             | 1 NM                              | 2.7 NM                                   | 6.8 NM                                   |  |
| CATEGORY        | A                                 | B  | C  | D  |
| LPV DA          | 634- <sup>3</sup> / <sub>4</sub>  | 250 (300- <sup>3</sup> / <sub>4</sub> )  |  |  |
| LNAV/VNAV DA    | 905-1 <sup>3</sup> / <sub>4</sub> | 521 (500-1 <sup>3</sup> / <sub>4</sub> ) |  |  |
| LNAV MDA        | 1020-1                            | 636 (700-1)                              | 1020-1 <sup>7</sup> / <sub>8</sub>       | 636 (700-1 <sup>7</sup> / <sub>8</sub> ) |
| CIRCLING        | 1020-1                            | 617 (700-1)                              | 1020-1 <sup>7</sup> / <sub>8</sub>       | 1060-2                                   |
|                 |                                   |  | 617 (700-1 <sup>7</sup> / <sub>8</sub> ) | 657 (700-2)                              |