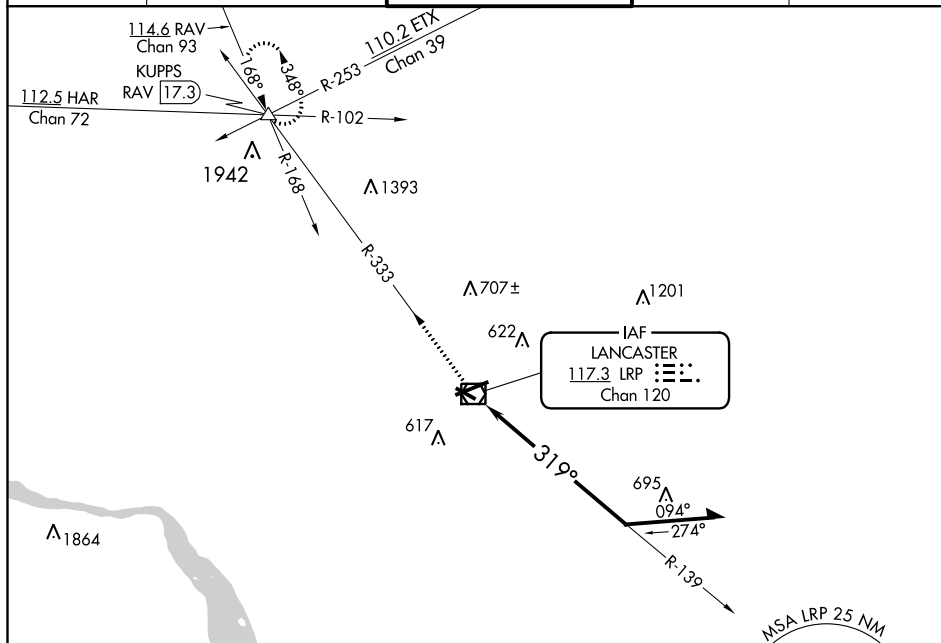


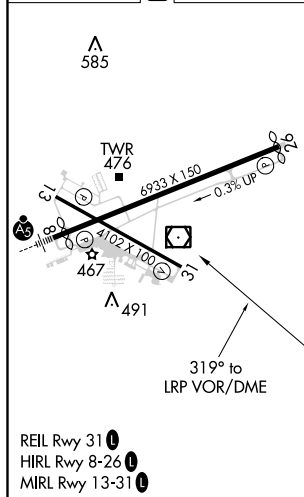
VOR RWY 31  
LANCASTER (LNS)

**MISSED APPROACH:** Climb to 3000 via LRP VOR/DME R-333 to KUPPS INT/RAV 17.3 DME and hold.

ATIS <b>125.675</b>	HARRISBURG APP CON <b>126.45 281.525</b>	LANCASTER TOWER ★ <b>120.9 (CTAF) 0 251.1</b>	GND CON <b>121.8</b>	UNICOM <b>122.95</b>
------------------------	---	--	-------------------------	-------------------------



ELEV 403	<b>D</b>	TDZE 403
----------	----------	----------



3000 ↑	LRP R-333	KUPP5 △	<p>LRP VOR/DME</p> <p>Remain within 10 NM</p> <p>139°</p> <p>319°</p> <p>2500</p>	
CATEGORY	A	B	C	D
S-31	1060-1	657 (700-1)	1060-1 <sup>3</sup> / <sub>4</sub> 657 (700-1 <sup>3</sup> / <sub>4</sub> )	1060-2 657 (700-2)
CIRCLING	1060-1	657 (700-1)	1060-1 <sup>3</sup> / <sub>4</sub> 657 (700-1 <sup>3</sup> / <sub>4</sub> )	1080-2 <sup>1</sup> / <sub>4</sub> 677 (700-2 <sup>1</sup> / <sub>4</sub> )

NE-4, 31 DEC 2020 to 28 JAN 2021

NE-4 31 DEC 2020 to 28 JAN 2021