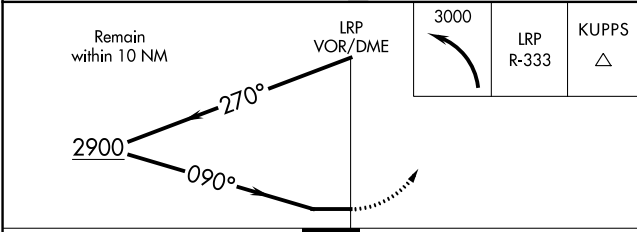
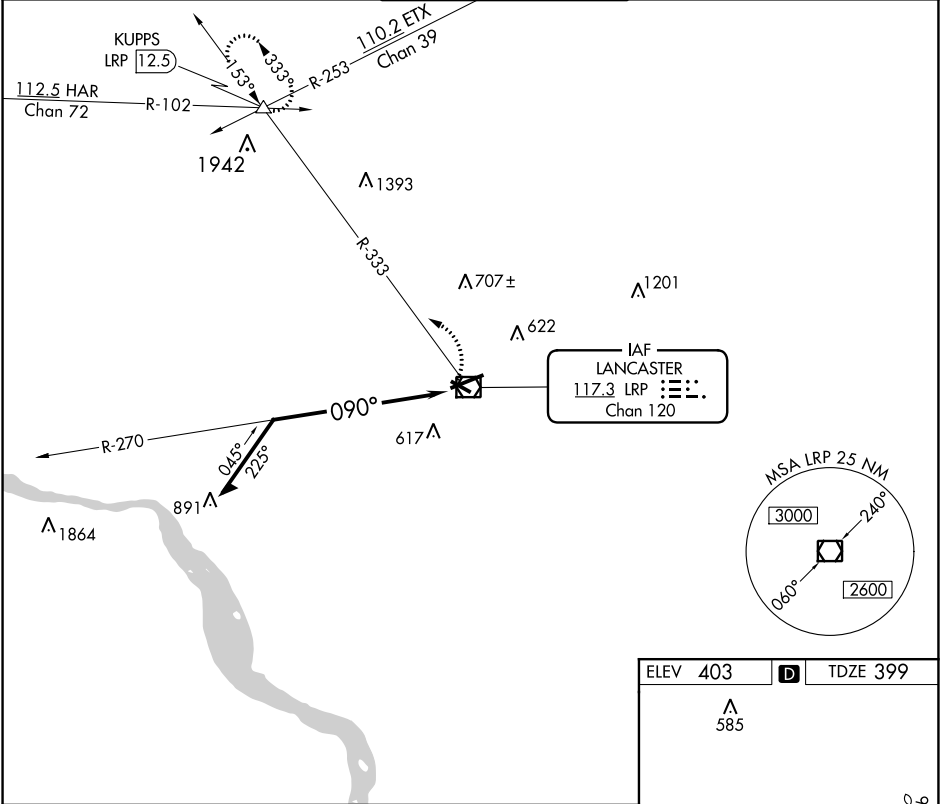


VOR/DME LRP	APP CRS	Rwy Idg
117.3	090°	6118
Chan 120		TDZE 399
		Apt Elev 403

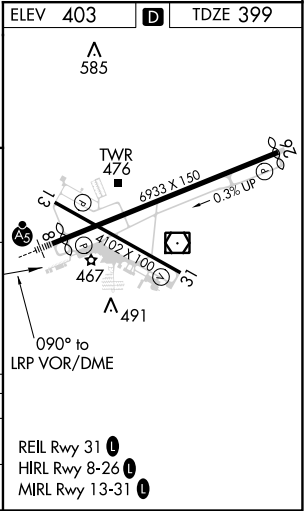
VOR RWY 8
LANCASTER (LNS)

 Night landing: Rwy 13, 31 NA. Inop table does not apply. When local altimeter setting not received, use Harrisburg Init altimeter setting and increase all MDA 80 feet.	MALSRL 	MISSED APPROACH: Climbing left turn to 3000 via LRP VOR/DME R-333 to KUPPS INT/LRP 12.5 DME and hold.
---	------------	---

ATIS 125.675	HARRISBURG APP CON 126.45 281.525	LANCASTER TOWER ★ 120.9 (CTAF) 251.1	GND CON 121.8	UNICOM 122.95
------------------------	---	---	-------------------------	-------------------------



CATEGORY	A	B	C	D
S-8	1400-1¼ 1001 (1000-1¼)	1400-1½ 1001 (1000-1½)	1400-3	1001 (1000-3)
CIRCLING	1400-1¼ 997 (1000-1¼)	1400-1½ 997 (1000-1½)	1400-3	997 (1000-3)



NE-4, 31 DEC 2020 to 28 JAN 2021

NE-4, 31 DEC 2020 to 28 JAN 2021