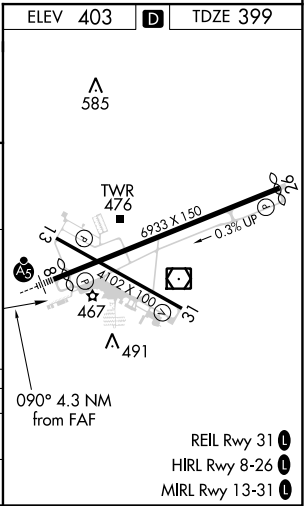
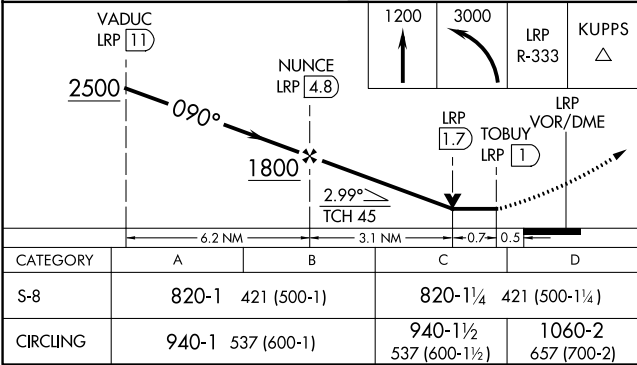
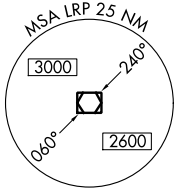
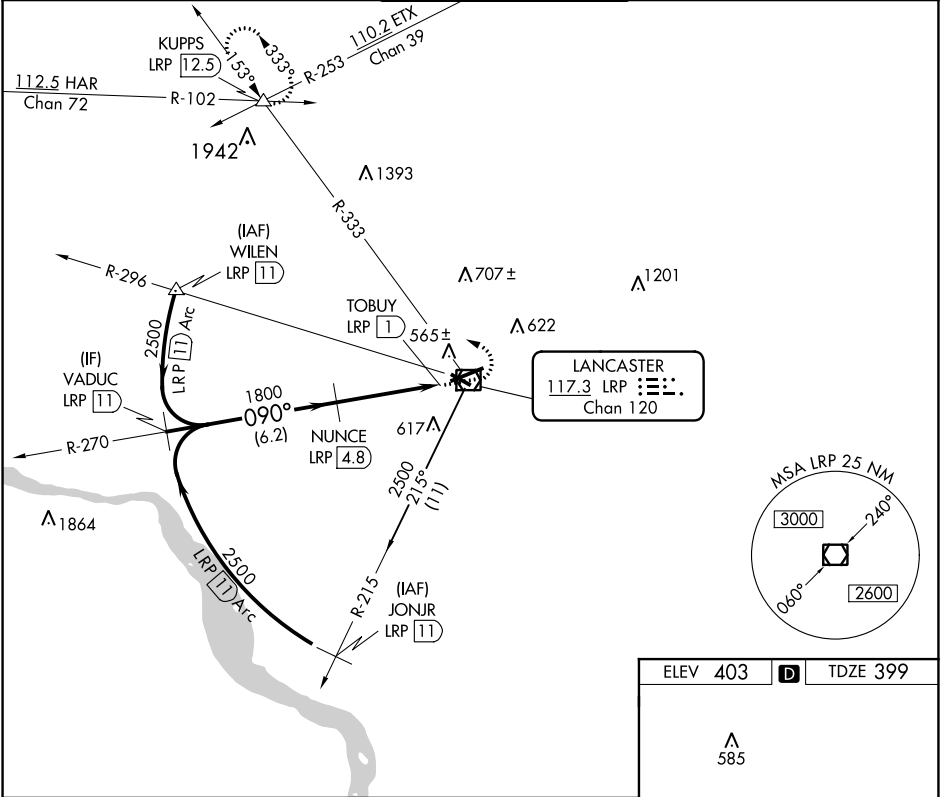


VOR/DME LRP	APP CRS	Rwy Idg	6118
117.3	090°	TDZE	399
Chan 120		Apt Elev	403

VOR/DME RWY 8
LANCASTER (LNS)

Night landing: Rwy 13, 31 NA. Inop table does not apply. When local altimeter setting not received, use Harrisburg Intl altimeter setting and increase all MDA 80 feet, and S-8 and Circling Cats C and D visibility ¼ mile.	MALSR	MISSED APPROACH: Climb to 1200 then climbing left turn to 3000 via LRP VOR/DME R-333 to KUPPS INT/LRP 12.5 DME and hold.
--	-------	--

ATIS 125.675	HARRISBURG APP CON 126.45 281.525	LANCASTER TOWER★ 120.9 (CTAF) 0 251.1	GND CON 121.8	UNICOM 122.95
------------------------	---	---	-------------------------	-------------------------



NE-4, 31 DEC 2020 to 28 JAN 2021

NE-4, 31 DEC 2020 to 28 JAN 2021