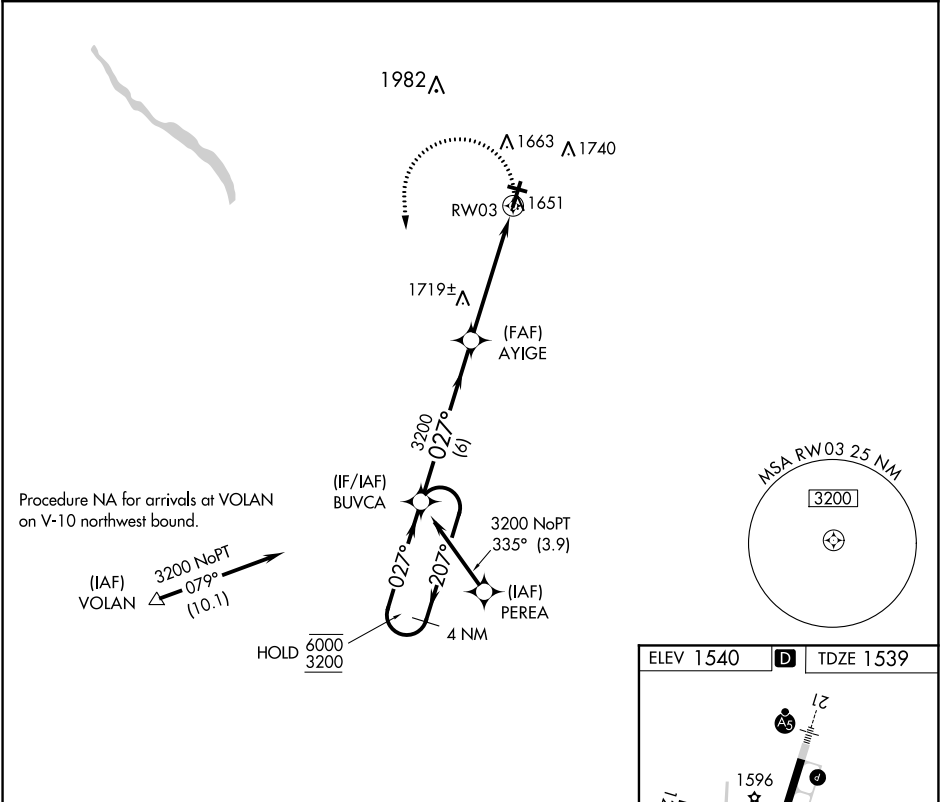


APP CRS	Rwy Idg	5200
027°	TDZE	1539
	Apt Elev	1540

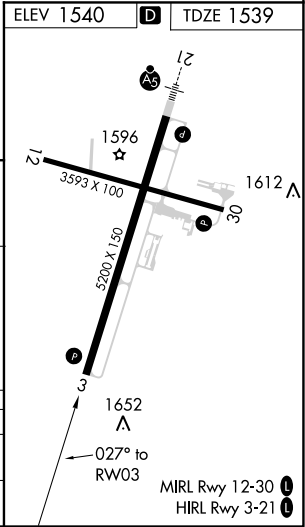
RNAV (GPS) RWY 3
VENANGO RGNL (FKL)

RNP APCH.	MISSED APPROACH: Climbing left turn to 3200 direct BUVCA and hold.
Rwy 3 helicopter visibility reduction below 3/4 SM NA. Circling Rwy 12 NA at night.	

AWOS-3PT 118.175	YOUNGSTOWN APP CON ★ 126.25 322.3	CLNC DEL 126.25	UNICOM 122.7 (CTAF)
---------------------	--------------------------------------	--------------------	------------------------



4 NM Holding Pattern		Visual Segment-Obstacles.		3200	BUVCA
6000 3200 ← 207° 027° →		BUVCA AYIGE		1.3 NM to RW03	
3200		3200		RW03	
6 NM		3.7 NM		1.3	
CATEGORY	A	B	C	D	
LNNAV MDA	1980-1	441 (500-1)	1980-1 3/8	441 (500-1 3/8)	
CIRCLING	1980-1 440 (500-1)	2000-1 460 (500-1)	2000-1 1/2 460 (500-1 1/2)	2100-2 560 (600-2)	



NE-4, 31 DEC 2020 to 28 JAN 2021

NE-4, 31 DEC 2020 to 28 JAN 2021