

VOR/DME CIP	APP CRS	Rwy Idg	5503
112.9	092°	TDZE	1816
Chan 76		Apt Elev	1817

VOR/DME RWY 7

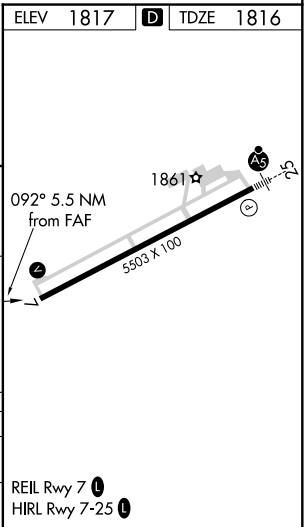
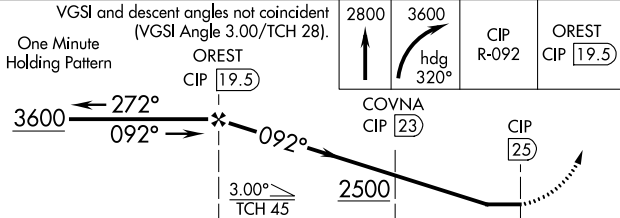
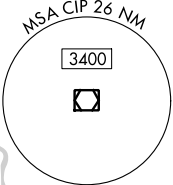
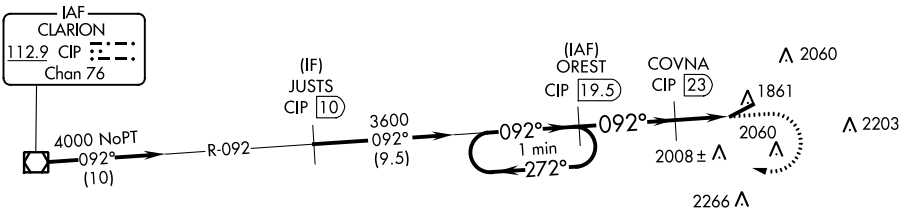
DUBOIS RGNL (DUJ)

<div><div>⚠</div><div>Visibility reduction by helicopters NA. When local altimeter setting not received, use Clearfield altimeter setting and increase all MDA 100 feet and Circling Cat C visibility ¼ mile.</div></div>	MISSED APPROACH: Climb to 2800 then climbing right turn to 3600 via heading 320° and CIP R-092 to OREST/19.5 DME and hold.
---	--

ASOS 119.025	CLEVELAND CENTER 126.725 291.65	UNICOM 123.0 (CTAF) 0
-----------------	------------------------------------	--------------------------

Λ 2395

Procedure NA for arrivals at CIP VOR/DME on airway radials 050 CW 121.



CATEGORY	A	B	C	D
S-7	2260-1 444 (500-1)	2260-1¼ 444 (500-1¼)	2260-1½ 444 (500-1½)	2260-2 444 (500-2)
CIRCLING	2300-1 483 (500-1)	2300-1¼ 483 (500-1¼)	2320-1½ 503 (600-1½)	2380-2 563 (600-2)

NE-4, 31 DEC 2020 to 28 JAN 2021

NE-4, 31 DEC 2020 to 28 JAN 2021