

WAAS
CH **63006**
W11A

APP CRS
113°

Rwy Idg **5400**
TDZE **644**
Apt Elev **660**

RNAV (GPS) RWY 11

CHESTER COUNTY G O CARLSON (MQS)

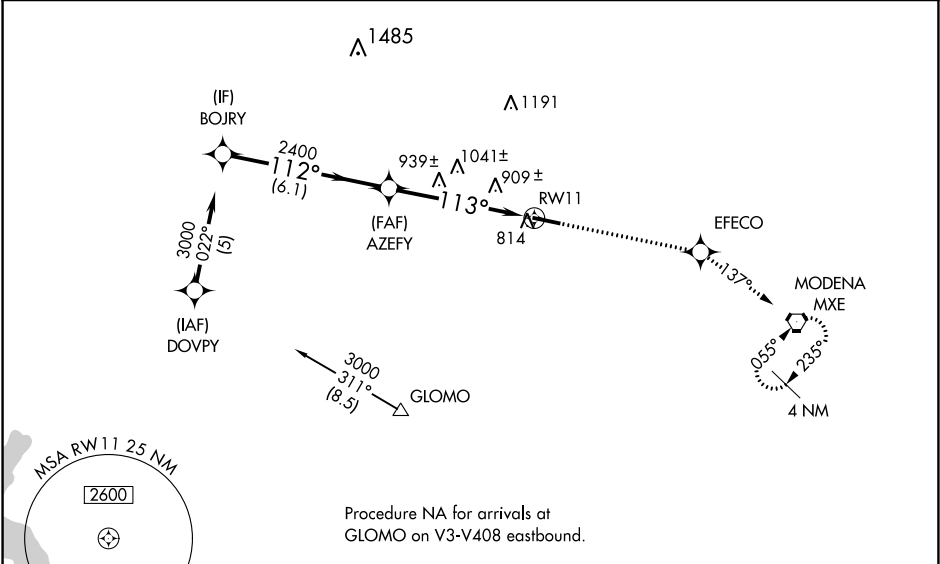
⚠

⚠

Baro-VNAV NA when using Heritage Field altimeter setting. For uncompensated Baro-VNAV systems, LNAV/VNAV NA below -16°C (4°F) or above 47°C (116°F). DME/DME RNP-0.3 NA. Rwy 11 helicopter visibility reduction below ¾ SM NA. When local altimeter setting not received, use Heritage Field altimeter setting and increase all DA 98 feet and all MDA 100 feet, LPV visibility ½ mile all Cats, LNAV/VNAV visibility ½ mile all Cats, LNAV visibility Cats C and D ¼ mile, and Circling visibility Cat C and D ¼ mile.

MISSED APPROACH:
Climb to 2400 direct EFECO and on 137° track to MXE VORTAC and hold.

AWOS-3 126.25	PHILADELPHIA APP CON 124.35 319.15	CLNC DEL 125.6	UNICOM 122.7 (CTAF) 0
-------------------------	--	--------------------------	---------------------------------



ELEV 660

TDZE 644

BOJRY

3000

Procedure Turn NA

GP 3.00°

TCH 42

AZEZY

2400

RW11

112°

113°

137° tr

6.1 NM

5.3 NM

CATEGORY	A	B	C	D
LPV DA	955-1		311 (300-1)	
LNAV/VNAV DA	1274-2 ¼		630 (700-2 ¼)	
LNAV MDA	1200-1	556 (600-1)	1200-1 ½ 556 (600-1 ½)	1200-1 ¾ 556 (600-1 ¾)
CIRCLING	1200-1	540 (600-1)	1220-1 ½ 560 (600-1 ½)	1260-2 600 (600-2)

HIRL Rwy 11-29 0

REIL Rwy 11-29 0

113° to RW11

0.4% UP

5400 X 100

29