

WAAS CH <b>82506</b> <b>W29A</b>	APP CRS <b>293°</b>	Rwy Idg <b>5400</b> TDZE <b>660</b> Apt Elev <b>660</b>
--	------------------------	---

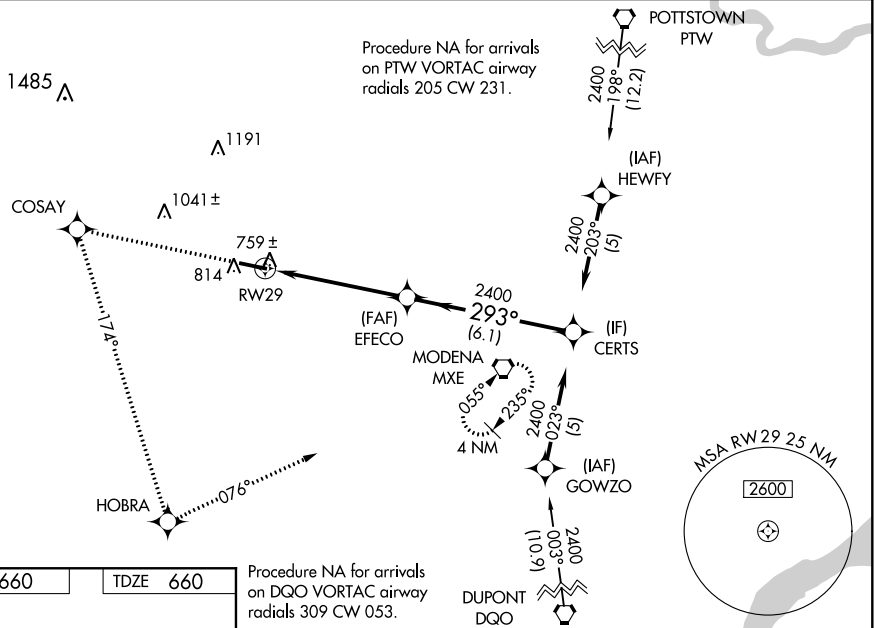
# RNAV (GPS) RWY 29

## CHESTER COUNTY G O CARLSON (MQS)

**T** Baro-VNAV NA when using Heritage Field altimeter setting. For uncompensated Baro-VNAV systems, LNAV/VNAV NA below -16°C (4°F) or above 47°C (116°F). **A** DME/DME RNP-0.3 NA. When local altimeter setting not received, use Heritage Field altimeter setting and increase all DA 98 feet and all MDA 100 feet, LPV visibility  $\frac{1}{4}$  mile all Cats, LNAV/VNAV visibility  $\frac{1}{4}$  mile all Cats, LNAV visibility Cats C and D  $\frac{1}{4}$  mile, and Circling visibility Cat C and D  $\frac{1}{4}$  mile. VDP NA when using Heritage Field altimeter setting. Rwy 29 helicopter visibility reduction below  $\frac{3}{4}$  SM NA.

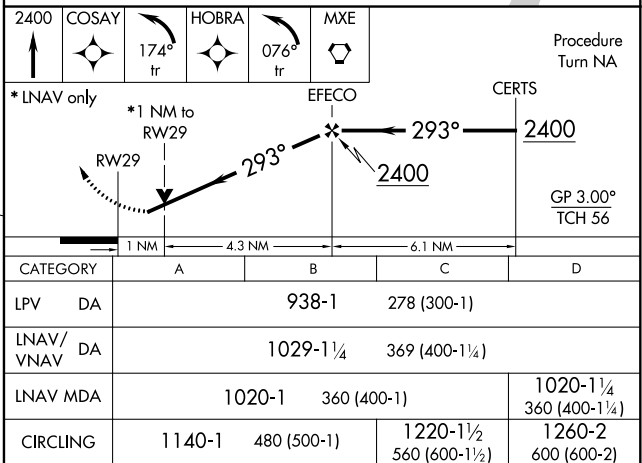
**MISSED APPROACH:**  
Climb to 2400 direct  
COSAY and left turn  
on 174° track to  
HOBRA and left turn  
on 076° track to MXE  
VORTAC and hold.

AWOS-3 <b>126.25</b>	PHILADELPHIA APP CON <b>124.35 319.15</b>	CLNC DEL <b>125.6</b>	UNICOM <b>122.7 (CTAF) 0</b>
-------------------------	--	--------------------------	---------------------------------



ELEV 660		TDZE 660
----------	--	----------

Procedure NA for arrivals  
on DQO VORTAC airway  
radials 309 CW 053.



COATESVILLE, PENNSYLVANIA  
Orig-A 07DEC17

CHESTER COUNTY G O CARLSON (MQS)  
RNAV (GPS) RWY 29