

YORK, PENNSYLVANIA

AL-5137 (FAA)

20198

APP CRS
346°

Rwy Idg	4449
TDZE	485
Apt Elev	495

RNAV (GPS) RWY 35
YORK (THV)

RNP APCH.

T Rwy 35 helicopter visibility reduction below $\frac{3}{4}$ SM NA.
A Circling Rwy 17 NA at night.

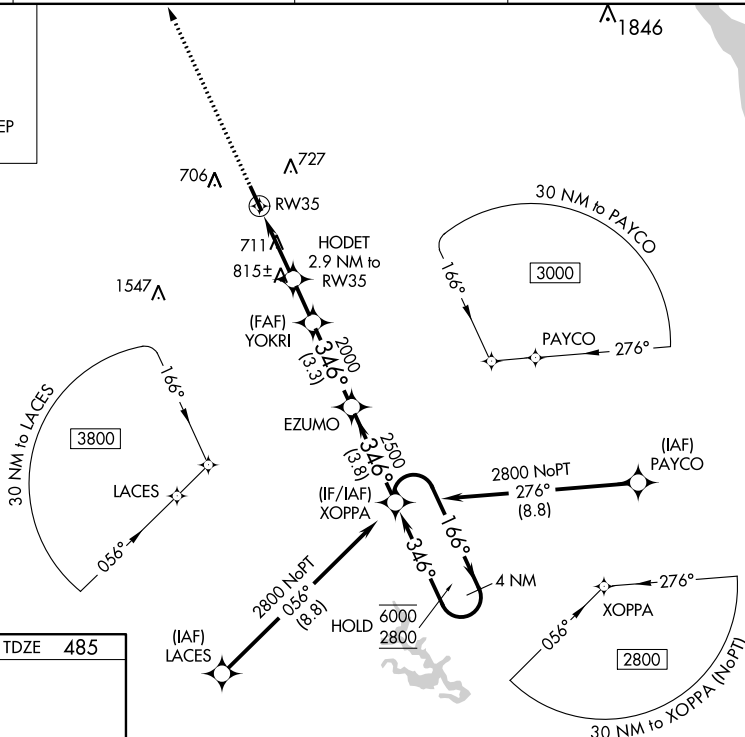
MISSED APPROACH: Climb to 3300 direct WABEP and hold.

ASOS
119.275

HARRISBURG APP CON
124.1 273.525

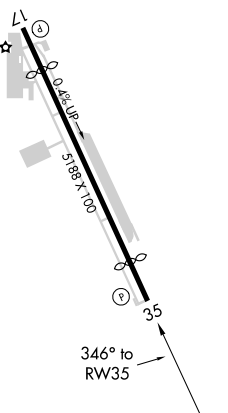
CLNC DEL
121.65UNICOM
123.0 (CTAF)

MISSED APCH FIX



ELEV 495

TDZE 485



MIRL Rwy 17-35
REIL Rwy 17 and 35

3300	WABEP
	

Figure 1: Schematic diagram of the flight profile of the aircraft. The diagram shows a horizontal flight path at 2800m with a 166° heading, a climb segment at 2500m with a 346° heading, and a descent segment at 2000m. Key points include RW35, HODET (2.9 NM to RW35), and YOKRI. Altitudes 1440, 2000, and 2500 are marked. Distances between points are 1.3 NM, 1.6 NM, 1.7 NM, 3.3 NM, and 3.8 NM.

CATEGORY	A	B	C	D
LNAY MDA	1080-1	595 (600-1)	1080-1¾	595 (600-1¾)
CIRCLING	1220-1 725 (800-1)	1240-1 745 (800-1)	1260-2¼ 765 (800-2¼)	1260-2½ 765 (800-2½)

YORK, PENNSYLVANIA

Amdt 1D 05DEC19

YORK (THV)

39°55'N-76°52'W

RNAV (GPS) RWY 35

NE-4, 31 DEC 2020 to 28 JAN 2021