

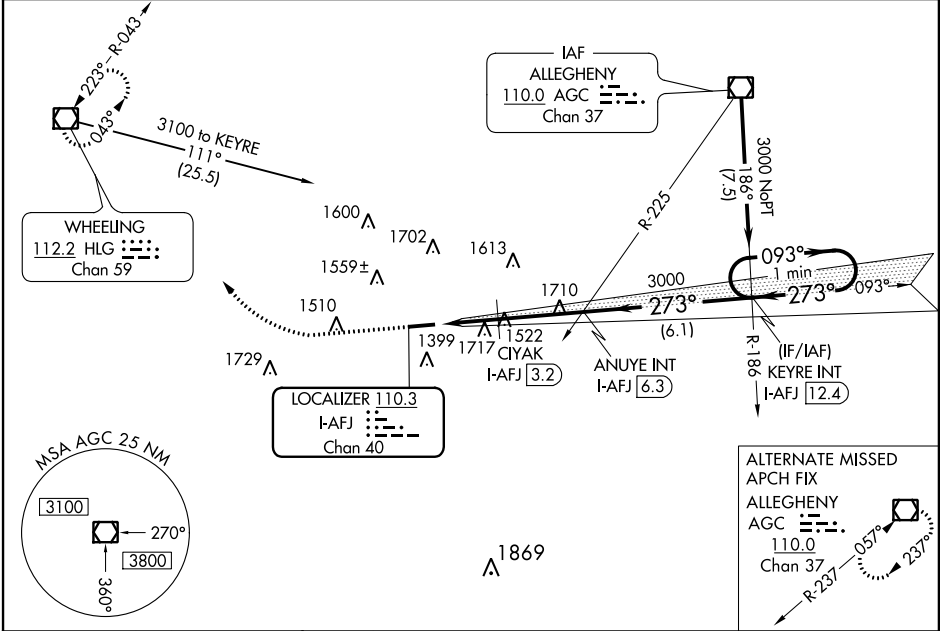
LOC/DME I-AFJ	APP CRS	Rwy Idg	5004
110.3	273°	TDZE	1184
Chan 40		Apt Elev	1184

ILS or LOC RWY 27  
WASHINGTON COUNTY (AFJ)

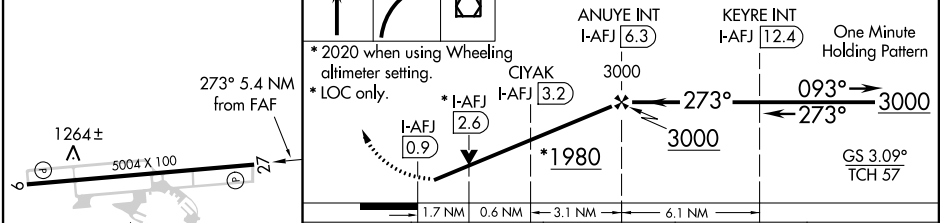
**⚠** Night Landing: Rwy 9 NA. Helicopter visibility reduction below ¾ SM NA. VDP NA when using Wheeling altimeter setting. When local altimeter setting not received, use Wheeling altimeter setting and increase all DA/MDA 40 feet, increase Circling visibility Cats A and D ¼ mile; CIYAK fix minimums: increase visibility S-LOC 27 Cats C and D ½ mile, Circling Cat C ½ mile and Cat D ¼ mile.

**MISSED APPROACH:** Climb to 1700 then climbing right turn to 3300 direct HLG VOR/DME and hold.

AWOS-3PT	PITTSBURGH APP CON	CLNC DEL	UNICOM
119.175	119.35 285.575	127.3	122.975 (CTAF) 0



ELEV 1184	TDZE 1184	1700	3300	HLG	VGSI and ILS glidepath not coincident. (VGSI Angle 3.09/TCH 62).
-----------	-----------	------	------	-----	--



CATEGORY	A	B	C	D
S-ILS 27	1384-¾ 200 (200-¾)			
S-LOC 27	1980-1 796 (800-1)	1980-1¼ 796 (800-1¼)	1980-2½ 796 (800-2½)	796 (800-2½)
CIRCLING	1980-1 796 (800-1)	1980-1¼ 796 (800-1¼)	1980-2½ 796 (800-2½)	2040-2¾ 856 (900-2¾)
CIYAK FIX MINIMUMS				
S-LOC 27	1780-1	596 (600-1)	1780-1¾	596 (600-1¾)
CIRCLING	1800-1	616 (700-1)	1800-1¾	616 (700-1¾)
			2040-2¾	856 (900-2¾)